



# HERITAGE IMPACT ASSESSMENT

Karlskrona culture house

2022-05-31

# Table of contents

Introduction and background	3	HERITAGE IMPACT ASSESSMENT	45
The Naval City of Karlskrona	7	Description of the revised proposal	47
Age spans of when the buildings surrounding Stortorget were built	14	Viewpoints to assess impact - sequence	51
Description of the OUV – Outstanding Universal Value	19	Viewpoints to assess impact - long distance	54
Attributes of the World Heritage property	21	Viewpoints to assess impact - short distance	61
which are relevant to the assessment	21	Viewpoints from where the proposal is not visible	74
Breakdown of attributes - authenticity	22	Summary - Heritage Impact Assessment	77
Breakdown of attributes - integrity	33	Impact Assessment Graph	80
Historic representations of Karlskrona skyline	36	List of references	81
Current situation Karlskrona skyline	42	Appendix	81

## PROJECT INFORMATION

Report commissioned by Karlskrona municipality  
Author of this report: Mattias Eklund, Built Heritage Consultant, Certified Heritage Values Specialist (KUL2)  
Reviewed by Urban Nilsson, Built Heritage Consultant, Certified Heritage Values Specialist (KUL2)  
Photographs and illustrations: Mattias Eklund unless stated otherwise.  
Historic photographs: Blekinge museum, unless stated otherwise.  
Cover: Rendering of the Culture House proposal by Dortre Mandrup. Rendered by: MIR

# Introduction and background

## 2006 - 2016 - Background

The municipality of Karlskrona has officially been planning to build a culture house since 2006, when a committee was appointed. In 2009, extensive citizen dialogues were held, and a vision for the building was worked out. Several locations were discussed. A previous proposed location was considered but ruled out since it would require the demolition of a building from 1885. When the former post office was deemed unfit for use due to its hazardous conditions in 2015-16, its location was chosen, in dialogue with the County Administrative Board. The possibility to make the city square a culture hub was vital in the decision to examine the possibilities of replacing the post office with the culture house. In 2007, a City Development Strategy was produced by Gehl Architects. The report was commissioned by the Municipality and highlights the square as central to the historical narrative of the city and that the quality of the public spaces needs to be strengthened. As a continuation of Gehl's strategy, Sweco Architects produced a report in 2010 on the possible development of Stortorget. The report emphasizes, among other things, that the baroque features of the square are obscured because of previous demolitions. The report suggested that a row of trees should be planted in front of

the water castle and post office building to better define the square to the south.

The possibility to accommodate the suggestions in the reports by placing a Culture house at the site was at the time lifted as an opportunity.

## 2016 - Reports produced on the possibility to place the Culture house at the Post Office site

In 2016 - 2017, studies regarding the heritage values of the current building was commissioned, together with an analysis of the impact a demolition would entail, an analysis of the impact on the national heritage interest, and finally an HIA - scoping report of the project, to examine the impact on the OUV.

## 2016 - Post Office Heritage Values Assessment

When the first HIA report was commissioned in 2016, the former Post Office wasn't fully described and evaluated regarding its Cultural-Historical values (a Swedish term roughly translated to Heritage values).

The former Post Office wasn't nationally listed or protected in the detailed city plan, but it was locally listed as a building with cultural-historical value by the

Blekinge County Museum in 1994. The local listing didn't include information regarding why the building was added or what characteristics that should be protected; the list was an indicative document marking buildings that potentially would require attention regarding its cultural-historical values in various development processes. Therefore, before the HIA rapport was initiated, an investigation of the Karlskrona Post Office was initiated to describe and outline its history, current situation and its cultural-historical values.

The report concluded that the façade towards the square had to some extent kept its character, but the other façades and the interiors were distorted to a point that the heritage values of the building were rather low.

The report was followed by an analysis on the impacts on the cultural-historical values a demolition would entail, as well as the impact on the national interest.

## 2017 - First version of the HIA

The first version of the HIA, dated 2017-02-15, set out to establish baseline data about the WH property, and to identify which World Heritage attributes that were at risk following a development at the proposed site. The report can be compared to what the HIA Guidelines

describes as a *Scoping report*. The report also included a crude analysis on the impact of a new volume at the site, based on the preconditions that were available at the time.

## Conclusions from the reports made in 2016-2017

The reports concluded that the project potentially would have negative consequences for the heritage environment as well as the OUV, but also some positive ones. Based on the reports that had been produced, the County Administrative Board made the assessment that the post office could be demolished without affecting the OUV.<sup>1</sup> In addition to this, the county administrative board concluded that the site was a good location for a cultural house, and that the attribute Stortorget as a public space would be strengthened. They also concluded that it would mean a positive effect if the block shape was restored. In their statement they also expressed concerns about the architectural qualities of a new building if the façade of the Post office was to be retained and stated that the architectural qualities of a new building were more important than retaining some part of the existing building. The full statement is included in the appendix at the end of this document.

<sup>1</sup> Stement DNR 436-1503-17

# Introduction and background

## 2019 - Architect competition

In 2017, the document “In-depth knowledge base for the national interest in cultural heritage conservation Karlskrona [K15]” was completed, commissioned by the County Administrative Board of Blekinge. The document stated the following guideline for additional buildings at Stortorget: “When adding new buildings to the square, public buildings or other open and accessible buildings should be prioritised around Stortorget over e.g. residential buildings. New buildings around the square should be designed with a high level of architectural ambition and subordinate to the churches and the former Town Hall in scale.”

In 2018, the Swedish Government decided on the proposal “Policy for designed living environments”. The main objective is to facilitate that architecture and design are to contribute to a sustainable, equitable and less segregated society in which everyone gets the opportunity to influence their shared environment. The policy is closely associated with the UN’s 17 global goals for sustainable development. Among other things, the policy states that municipalities should act as role models in the creation of public spaces/environments, in construction and management, and to

design and manage living environments with sustainability and high quality. Municipalities also have a special responsibility to act as a role model in the creation of public spaces and when locating municipal buildings.

Based on the new architectural policy, the guidelines in the in-depth knowledge base for the national interest, and the site’s sensitive location in relation to the national interest and the World Heritage Site, the municipality decided to host an international architectural competition conducted with clearly formulated preconditions regarding the heritage values of the site, in order to get the best possible outcome from an architectural perspective.

In 2019, the architectural competition was conducted where a winning proposal, designed by Dorte Mandrup A/S, was selected from several competition entries from various international participants. The proposal was considered by the jury to be the one that best met the heritage conditions set by the competition program, without compromising the desired programme, or the ambitions of the architectural design.

## 2019 - Second version of the HIA

A second version of the HIA was initiated after a winning proposal had been

selected in the architectural competition in April 2019. With a finished proposal, its impact could be studied using digital tools such as 3D-models and photo montages. This version of the HIA was submitted to the municipality 2019-12-09.

The report concluded that the project would entail some positive effects in relation to the OUV regarding the city grid plan, and the strengthening of the square as a public space, but also some negative effects linked to the height of the building, and that the proposal potentially could challenge the dominance of the churches from historically important locations.

The municipality chose at this stage to request a building permit.

## 2020 - Criticism of the proposal

After the submitted building permit was appealed to the County Administrative Board, a comment on the proposal by the Swedish National Heritage Board was requested.

The Heritage Board responded with an official statement dated 2020-10-20 (Dnr RAÄ-2020-1804). The statement from the Swedish National Heritage Board expressed concerns regarding the proposal (translated from Swedish by

the author of this report):

“From a cultural-historical perspective, the demolition of the post office leads to a reduction of cultural historical values in the built environment around the square. An additional building that deviates significantly in scale, roof shape and facade material breaks with the well-preserved cultural environment where previous [20th century] additions around the square were more adapted in form to the historical environment.

The attributes linked to the national interest are damaged and weakened, but this does not entail significant damage [a legal term that means that the project would have to be stopped in accordance to the environmental code (1988:808) chapter 3, section 6]. However, the National Heritage Board considers that the added building could be better adapted to the attributes of the national interest so that the damage is minimised.

The impact on the World Heritage’s OUV is decided by the UNESCO World Heritage Committee, but the National Heritage Board sees it as likely that the World Heritage site will be negatively affected, even if the programme of the culture house also adds positive values to the urban environment.”

In the technical review from ICOMOS

# Introduction and background

International, ref nr CLT/WHC/EUR/21/13143, ICOMOS expressed concerns regarding the project. The following quotes summarises the concerns:

“The vertically large structure of the planned Cultural Arts Centre in the very vicinity of Fredrickschurch would have a negative impact on the historic structures, and would also adversely affect the traditional historic small-scale buildings and the dialogue between the historic blocks and the public space. Moreover, the proposed building shape conflicts with the more traditional and regular forms of the surrounding historic buildings and would change the historic townscape and the structures of the historic town plan in the very core of the 17th century town. Furthermore, the proposed external finishes and appearance are inconsistent and too contrasting with the more traditional and regular forms of the surrounding historic urban environment. [...] The proposed construction of the Cultural Art Centre in the historic urban centre and its impact on “historic urban silhouette” concerns the very central, historic core area of Karlskrona. It concerns both the original grid plan and the historic buildings at the square. The silhouette of the square is very much dominated by the church, its setting, volume and height.”

## **2021 - A revised proposal**

As a response to the criticism of the proposal presented in the statement from the Swedish Heritage Board and in the ICOMOS Technical review, a revised proposal was produced by Dorte Mandrup and the Municipality. The proposal is described later on in this document.

## **The World Heritage convention in Swedish legislation**

Sweden ratified the World Heritage Convention in 1985, which entails an obligation to incorporate the convention into national legislation and policy. There are no special legal provisions governing World Heritage sites, but it is considered that the safeguarding of the Convention falls within current legislation. Cultural World Heritage sites in Sweden coincide with the areas designated as areas of national interest for the purposes of conservation of the cultural environment according to the Environmental code (1998:808) chapter 3, section 6. Furthermore, buildings and churches of importance are usually protected by the Historic Environment Act (1988: 950) or the Historic Environment Ordinance (1988:1188). Buildings and environments are also protected in various detailed plans or area regulations according to the Planning and Building Act

(2010:900), which also contains general regulations that safeguard cultural heritage buildings and environments.

The National Heritage Board has recommended that World Heritage sites generally should coincide with the national interest.

The borders of the national interest of Karlskrona coincide directly with the borders of the World Heritage site, and the description of the environments coincide with the RsOUV to a very high degree.

According to the County Administrative Board of Blekinge website, the description of the city of Karlskrona as a national interest is currently being reviewed. One of the goals is that the values and boundaries of national interest should be better synchronised with the World Heritage declaration, so that the World Heritage values can be asserted through the Environmental Code. The national interest of the City of Karlskrona [K 15] is described later in this report.

## **A note on this version of the HIA**

This document is the third version of the Heritage Impact Assessment of the Karlskrona Culture house project. Apart from the changes made in relation to the updated proposal, the main difference

from the previous version is a more in-depth study of the attributes that convey the OUV. This version also aims to address some concerns about the former HIA that was raised by the Swedish Heritage Board and ICOMOS in their respective statements.

## **Purpose**

The naval city of Karlskrona was declared a World Heritage site in 1998, which means that a Heritage Impact Assessment report (HIA) is required to evaluate the impact of the proposed changes to the World Heritage Site.

This report is the third version of a HIA assessing the impact of the proposed culture house.

The model used follows the ICOMOS Guidance on Heritage Impact Assessments for Cultural World Heritage Properties (2011).

# Introduction and background

## Methodology

This report is based on the two previous versions of the HIA. The first HIA report (2017) was conducted according to the following process:

During a meeting with the City Antiquarian of Karlskrona 2017-01-10 the scope and expectations of the outcome was established. The City Antiquarian conveyed wishes and expectations from the other relevant World Heritage Parties involved in the process.

The first step of the process was to fully examine the building that was proposed to be replaced, which resulted in a separate report, Cultural-Historical Values Assessment Karlskrona Post Office (20170130). This report was intended as a knowledge base for the HIA. The examination was made through site visits as well as archive and literature studies.

With the first report as a base, a deeper examination of the rSoOUV of Karlskrona took place, where an identification of attributes that convey OUV was the goal. The study was conducted following three questions described in the document *Guidance to Heritage Impact Assessments for Cultural World Heritage properties* (2011):

- What is the heritage at risk and why is it important – how does it contribute to OUV?

An in-depth study of Karlskrona's OUV and an investigation of how the existing building relates to the OUV. The study was made through studying the rSoOUV, management plans and other official documents, outlining listed buildings nationally and locally, comparisons of historic maps, historic paintings and photographs and condensing and presenting the historical context relevant to the study. This study has been further deepened in the updated versions of the report (2019 and 2022).

- How will the development proposal impact on OUV?

A description of the proposal and the factors that impact the OUV and its attributes. The examination of the impact was made through studying photo montages from different angles. A description of negative as well as positive impacts on the OUV.

- How big is the impact?

An assessment of the magnitude of the impact.

- How can these effects be avoided,

reduced, rehabilitated, or compensated?

A discussion on how altering the proposal might have a lesser impact on the OUV.

The second (2019) and third versions of the HIA (this document) have revisited the previous steps to various degrees and updated the outcomes of the analyses following the deeper examinations of the OUV attributes and the updated proposal.

## Document disposition

This document begins with an introduction to the report's background, purpose and methodology.

The next part is a cultural-historical orientation regarding the World Heritage property, focusing on the city plan and Stortorget.

This is followed by a review of Karlskrona's OUV and the criteria that the site meets the requirements to be called a World Heritage site.

This is followed by an analysis on how the existing building relates to the OUV and the attributes.

This is followed by the HIA analysis.

# The Naval City of Karlskrona

## Historical context

### Foundation and city plan

Karlskrona was founded in 1680. At this time Sweden was a major power and needed a naval base to control the Baltic Sea. It was decided that a naval port should be built on the islands of Wämö and Trossö in the southeast part of the county, recently acquired from Denmark. Among those who played a vital role in the selection of the site for the naval port were Quartermaster General Erik Dahlberg, responsible for the nation's fortifications, his assistant Karl Magnus Stuart and Lord High Admiral Hans Wachtmeister, responsible for the military as well as the civilian rule and administration of the southeast of Sweden. In addition to Dahlberg, Nicodemus Tessin the elder were also commissioned to draught plans for the official buildings of the city.

One of the first layouts for the city plan was drawn up by Stuart in 1680, a draft showing fortifications and a few blocks of the civilian town laid out in a grid plan, according to the ideals of the time. The plan was adapted to Trossö's difficult terrain, and the plateau at the centre of the island was deemed suitable for Stortorget.

The draft was modified by Tessin the Elder shortly before his death that same year. Tessin had retained Stuart's main axis from the Admiralty Corps de garde in the south to Trossö's northern bridge, as well as the dividing line between the port and the civilian city. He added two inclined diagonal streets that converged on an open space in the southern end of the main axis, where a monumental Admiralty Palace was planned. Tessin had studied in Rome and been inspired by the Italian Baroque city plans, where diagonal streets were an important motif. Inspiration may even have come from Versailles.

Stuart continued his work on the city plan, based on Tessin's proposal, and in 1683 the first City- and Fortification plan for Karlskrona was ratified by the king. The monumental place that the main axis and the diagonal streets pointed to lacked only the Palace for the Admiralty. However, the palace was never to be built; Charles XI had transferred power from the Admiralty to the Admiral general, governor, and royal council count Hans Wachtmeister, who already owned and lived in a city palace at Borgmästarefjärden. The original intention for the site remained unfulfilled, but eventually it became the place for the Admiralty Clock Tower.

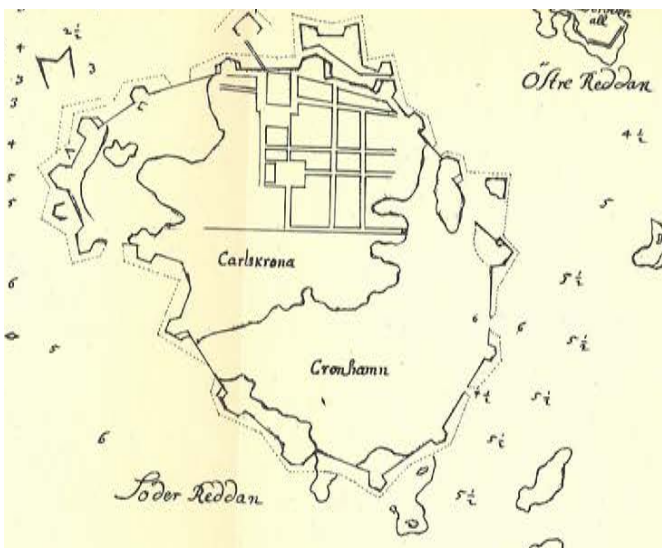
The original plan was to enclose the entire city with a large fortification with 16 bastions. The plan had to be revised because it would be too expensive and leave the fleet unprotected for a long period of time. A new City- and fortification plan was enacted in 1694, where only the naval area on the southern part of the island had been fortified, while the civilian city had been left unfortified. The site, which was previously intended for the Admiralty Palace, became the site for the Bastion Wachtmeister instead. As a result, the city centre was transferred to Stortorget, where stately buildings and churches were to be located.

### Stortorget

After Tessin the Elder's death, he was succeeded by his son, who assumed his father's responsibilities. Tessin the younger designed the first monumental building at Stortorget, the Church of the Holy Trinity at the south-western part of the square. The church was built in 1697 and inaugurated in 1709, even though it was far from finished. The church originally had a higher dome, but after the city fire in 1790, the church was rebuilt with a lower dome, designed by Olof Tempelman. The pillar portico on the church's north façade was designed by Tessin but was not added until 1862.

Frederikskyrkan, situated at the eastern part of the square, was also designed by Tessin the Younger. The building project began in 1720 and was finished in 1758. The town hall was originally located at the corner of Kungsgatan and Ronnebygatan. After the city fire in 1790 it was relocated to the western part of Stortorget. Other buildings around the square consisted into the 19th century exclusively of wooden residential buildings with one or two floors. The Water Castle, the water tower at the southern part of the square, was built in 1863.

After the great fire of 1790, the city was still occasionally hit by large fires, as was the case with the blocks north of the square, that burned down in 1887. The former wooden houses were then replaced by stone houses mainly in Neo Renaissance style, including the City Hotel.



1680. The first city layout draft by K M Stuart. The diagonal streets were later added by Nicodemus Tessin the Elder. Image source: Karlskrona municipality



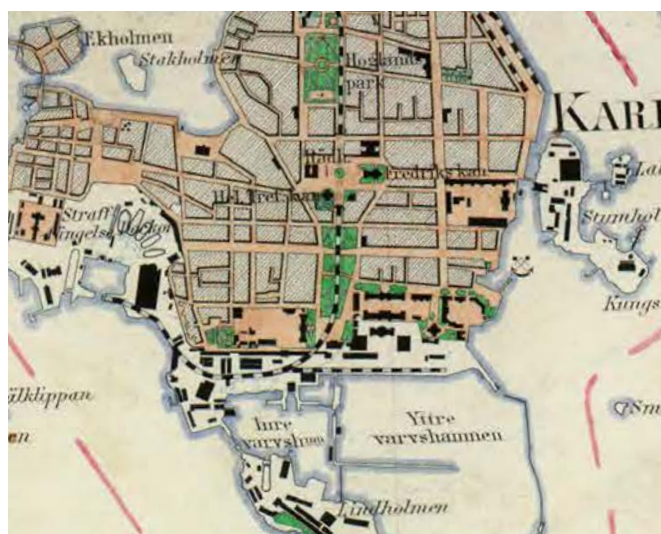
1742. The diagonal streets cuts through the grid plan surrounding Stortorget. The planned palace of the Admiral had been replaced by the bastion Wachtmeister, thus making Stortorget the central point of the civilian city. Image source: Krigsarkivet



1813. 23 years after the devastating fire of 1790. The city layout survived but the buildings were replaced. The proposed new Admiralty Church has been added to the map, but the church was never actually built. Image source: the Lantmäteristyrrelsen archives



1886 (approximately). The map was drawn some years before the railroad tunnel was built under Stortorget. The principal northern-southern axis is still dominant. Image source: the Lantmäteristyrrelsen archives



1915. 12 years after the statue on Stortorget was built. Image source: the Lantmäteristyrrelsen archives



1949. A few years after the Post Office was built. The old wooden house built in 1790 and demolished in 1973 is seen at the north-eastern corner of the block. Image source: Karlskrona municipality

# The Naval City of Karlskrona

## Later additions to the square

Large-scale fires were not an issue during the 20th century; however, older buildings were still replaced. In the early 20th century, the buildings surrounding the square to the south and east were to a large extent wooden houses built after the fire of 1790. In 1942, the Post Office in the block Sjöstjerna in the southern part of the Square replaced two houses from 1790. The Concert house was built in 1939 on a vacant plot next to the former Headmasters building in the northeast part of the square. In the Lagercrantz block, three wooden houses from 1790 were replaced by the "Military home" in 1951. Large-scale demolitions transformed a big part of Trossö in the 1950's, -60's, and 1970's. In the southeast corner of the square, the entire block Hjulhammar, consisting of about 20 buildings built between 1790 and the late 1800's, were demolished in 1959 and replaced by a single building complex that covered the whole block. In the part of the block Sheldon that faces the square, a house from 1790 was replaced with an apartment building in 1942 and a neo renaissance building from the 1890's was replaced by another apartment building in 1972.

Image source, all images on the following three pages: Blekinge museum.



The northern side of the Sjöstjerna block in the early 1900's. To the far left is "Uncle Rubens house", that was demolished in 1973. The other two buildings were replaced by the post office in the early 1940's.



The new-built post office in 1942. Photo: unknown. Source: Postmuseum



A wooden house from 1790 is being demolished to make way for the new City Library in 1957.



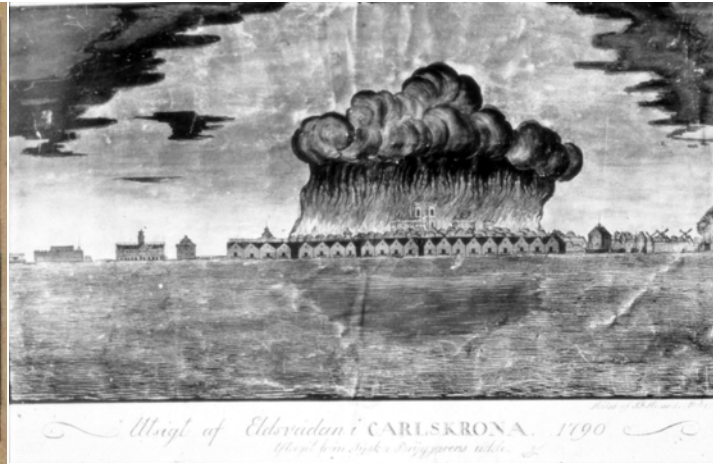
The newly built City Library. Late 1950's.

# The Naval City of Karlskrona

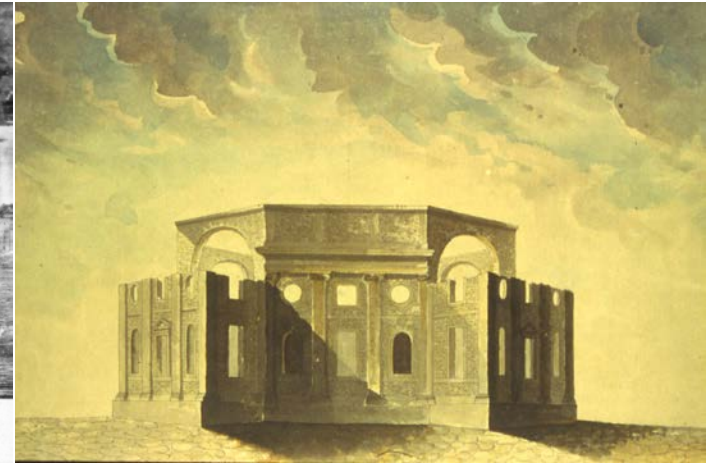
## Large-scale city transformations: fires and demolition



Stortorget and the Holy Trinity Church (also called the German church) in 1780, before the great city fire of 1790. Painting by Elias Martin.



"View of the fire in Karlskrona 1790". Almost the entire civilian city burned down. Painting by J.F Heland.



"The German church of Karlskrona after the fire that struck the city in the year 1790", painting by Olof Tempelman who designed the new neoclassical dome.



Ronnebygatan before the great city fire of 1887.



Ronnebygatan in 1887, after the great city fire. Stortorget is visible to the left.



Ronnebygatan 1907. The former quaint cobblestone street with wooden houses was transformed to a modern, paved street with expensive buildings in brick, plaster and stone.

# The Naval City of Karlskrona

## Large-scale city transformations: fires and demolition



The Lagercrantz block in 1948, shortly before the four buildings closest to the camera were demolished. Photo: Reinhold Odencrants / Blekinge museum



The Lagercrantz block in 1953. The same year the Military home was inaugurated. Colorized postcard.



The Hjulhammar block before demolition, 1950's.



The Hjulhammar block after demolition 1959-08-14.



Hjulhammar 20, built in 1961. The building covers the whole block. Photograph from 1989.

# The Naval City of Karlskrona



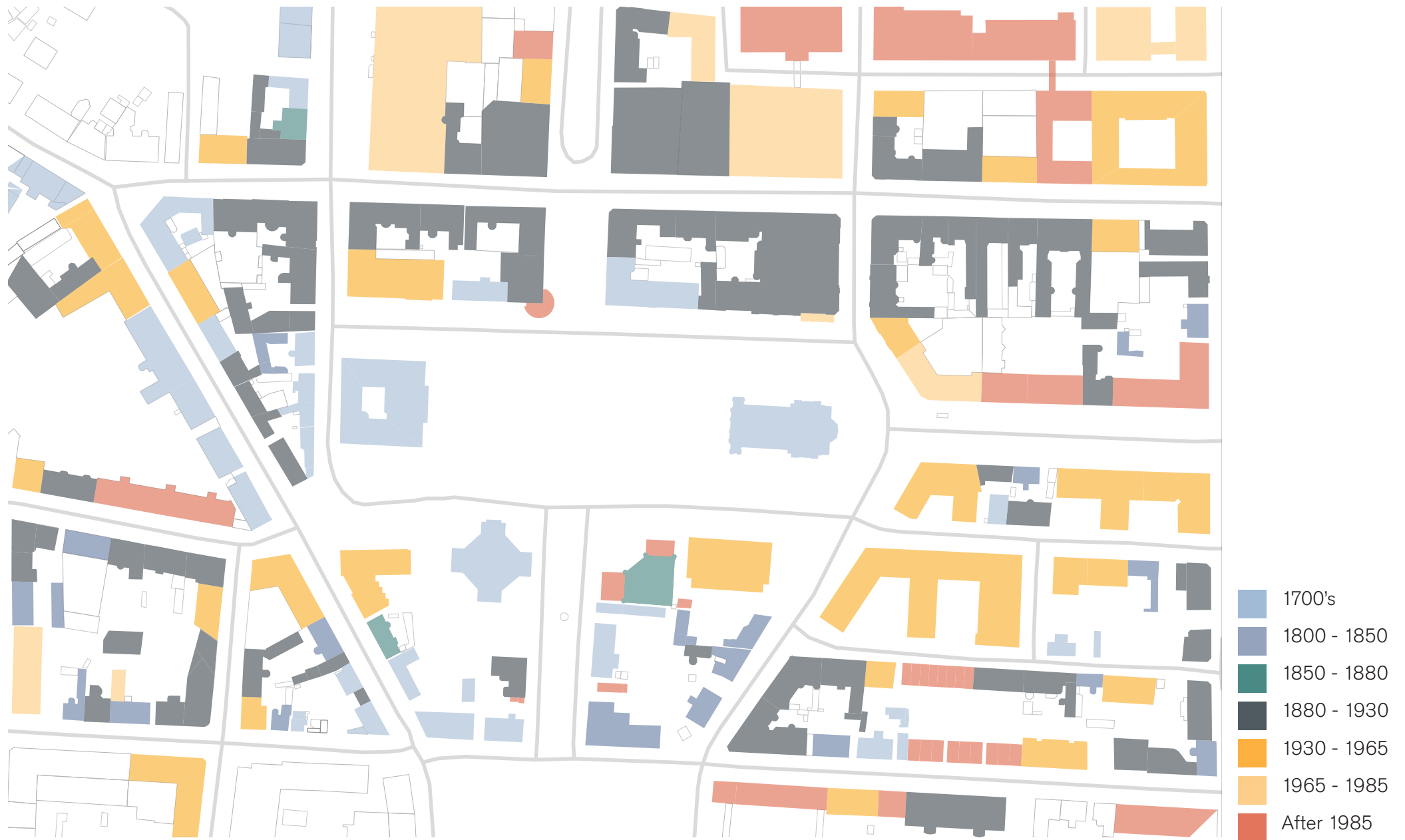
Stortorget and its surroundings around 1930. Buildings that have been replaced are marked in red. Image source: Postcard.

# The Naval City of Karlskrona



Stortorget in 2021. Image source: Lantmäteriet.

# Age spans of when the buildings surrounding Stortorget were built



# The Naval City of Karlskrona



Stortorget and its surroundings in 1921. The taller buildings north of the square (right part of the picture) were built in the three decades following the great city fire of 1887. To the south and east of the square the modest wooden houses still dominate.

Image source: Flygvapenmuseum.  
Unknown photographer.

# The Naval City of Karlskrona



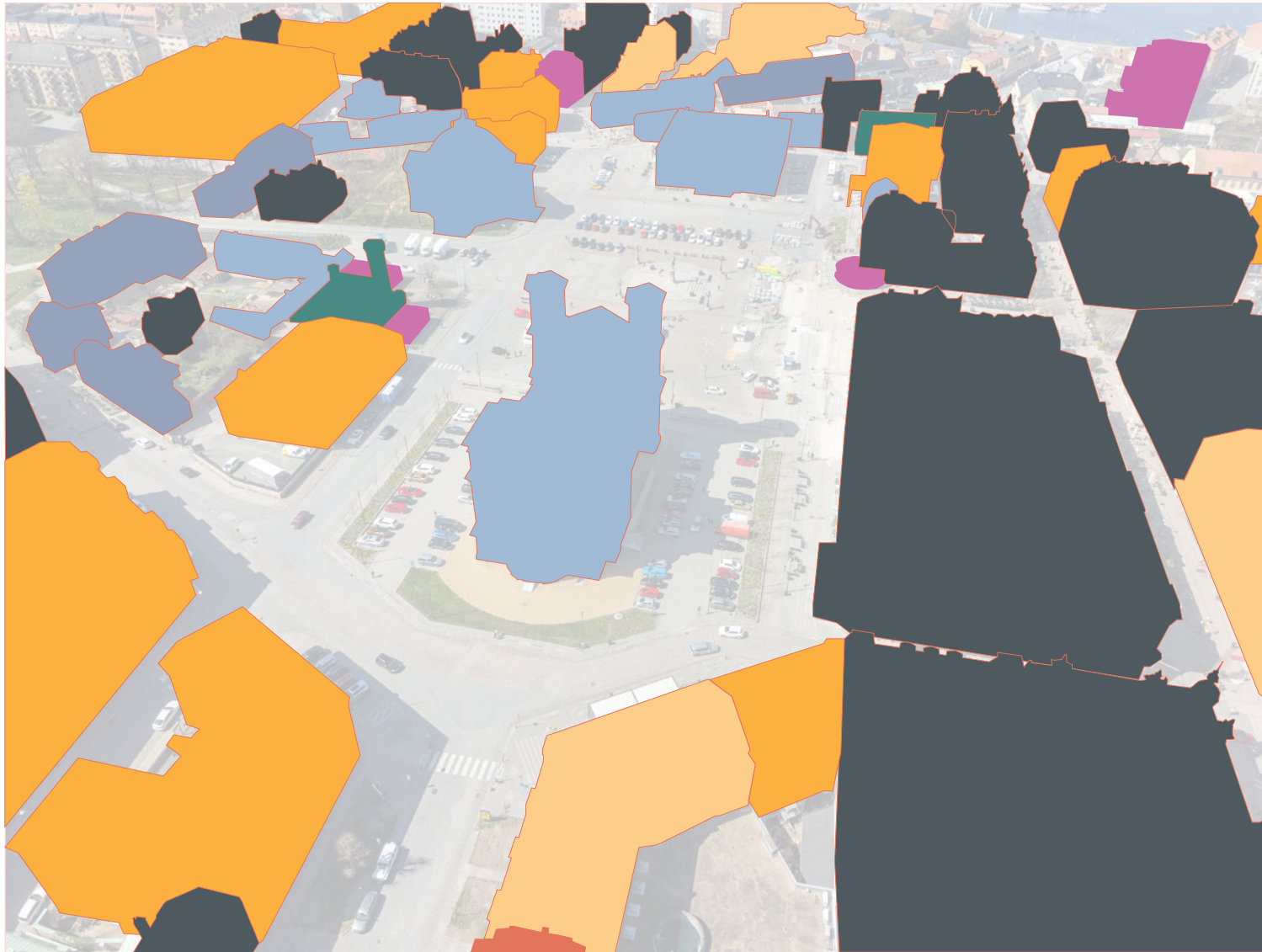
The same image as on the previous page with replaced buildings marked in red.  
Image source: Flygvapenmuseum.  
Unknown photographer.

# The Naval City of Karlskrona



The great square and its surroundings in 2022. Photo: Patric Söderström, Karlskrona kommun

# The Naval City of Karlskrona



Age spans on when the buildings adjacent to Stortorget were built.

- 1700's
- 1800 - 1850
- 1850 - 1880
- 1880 - 1930
- 1930 - 1965
- 1965 - 1985
- 1985 - 2000
- After 2000

# Description of the OUV – Outstanding Universal Value

An Outstanding Universal Value - OUV - is described by UNESCO as following:

*Outstanding Universal Value means cultural and/or natural significance which is so exceptional as to transcend national boundaries and to be of common importance for present and future generations of all humanity. As such, the permanent protection of this heritage is of the highest importance to the international community as a whole. The Committee defines the criteria for the inscription of properties on the World Heritage List.*

Karlskrona's OUV was defined when the property was inscribed on the World Heritage List in 1998. The value is based on criteria set by UNESCO.

The Naval City of Karlskrona meets two of the ten criteria:

Criterion (ii) *to exhibit an important interchange of human values, over a span of time or within a cultural area of the world, on developments in architecture or technology, monumental arts, town-planning or landscape design;*

Description of how Karlskrona meets the criterion:

*"Karlskrona is an exceptionally well preserved example of European planned naval town, which incorporates elements derived from earlier establishments in*

*other countries and which was in turn to serve as the model for subsequent towns with similar functions."*

Criterion (iv) *to be an outstanding example of a type of building, architectural or technological ensemble or landscape which illustrates (a) significant stage(s) in human history;*

Description of how Karlskrona meets the criterion:

*"Naval bases played an important role in the centuries during which naval power was a determining factor in European Realpolitik, and Karlskrona is the best preserved and most complete of those that survive."*

## Authenticity

Properties nominated under criteria (i) to (vi) must meet the conditions of authenticity described in the *Nara Document of Authenticity*. The ability to understand the value attributed to the heritage depends on the degree to which information sources about this value may be understood as credible or truthful. Knowledge and understanding of these sources of information, in relation to original and subsequent characteristics of the cultural heritage, and their meaning as accumulated over time, are the requisite bases for assessing all aspects of authenticity.

The description of the World Heritage Property authenticity from the rSoOUV:

*"The Naval Port of Karlskrona is authentic in terms of its location and setting, forms and designs, and materials and substances, as well as some of its uses and functions. Various kinds of cultural environments as well as individual buildings are largely preserved. In 2005, when Karlskrona became Sweden's national marine port, its role as an active naval port was strengthened. The Swedish authorities believe that the continued use of this historical environment will provide the best protection, and will assist in maintaining the property's authenticity. Several older buildings and constructions in the port area have been restored in order that they may be reused."*

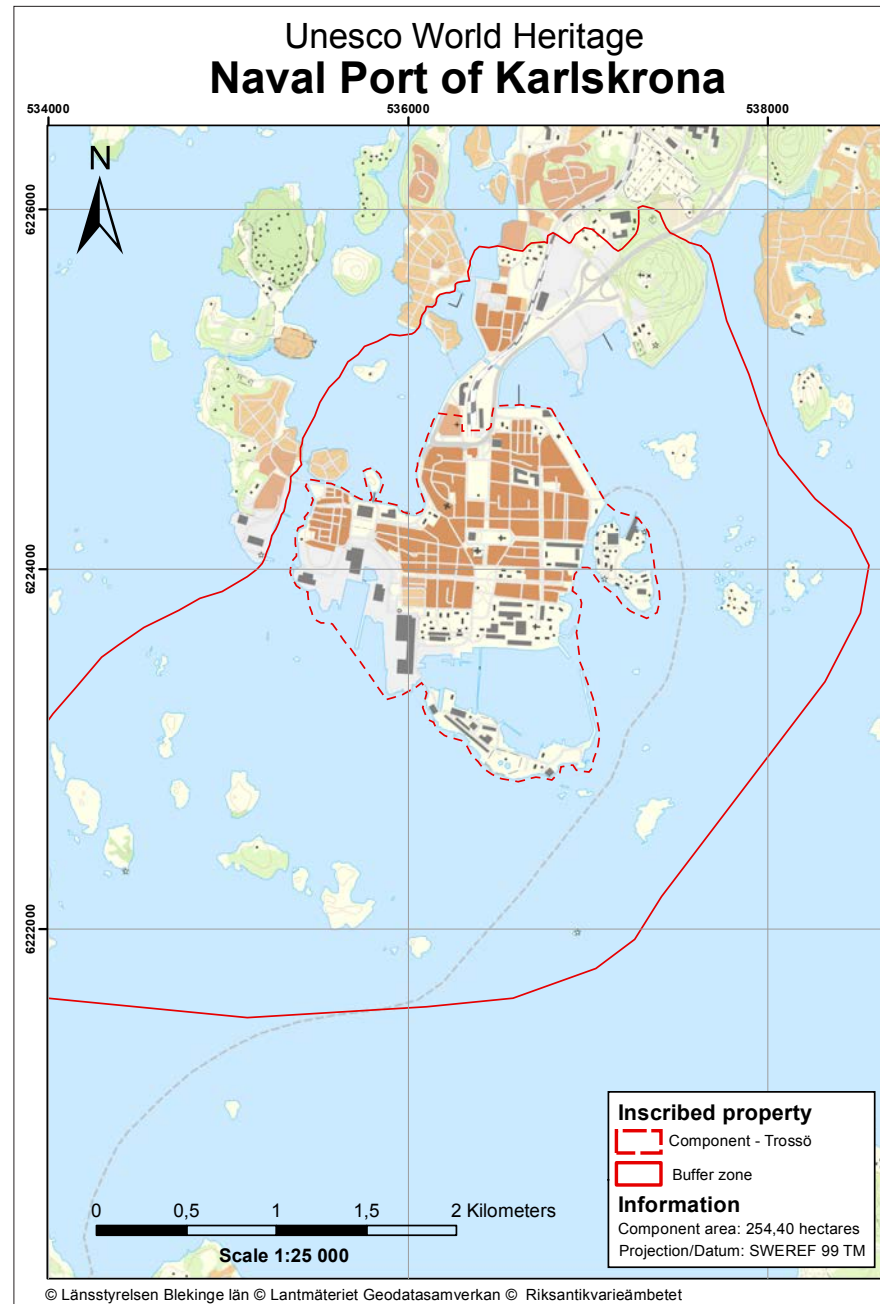
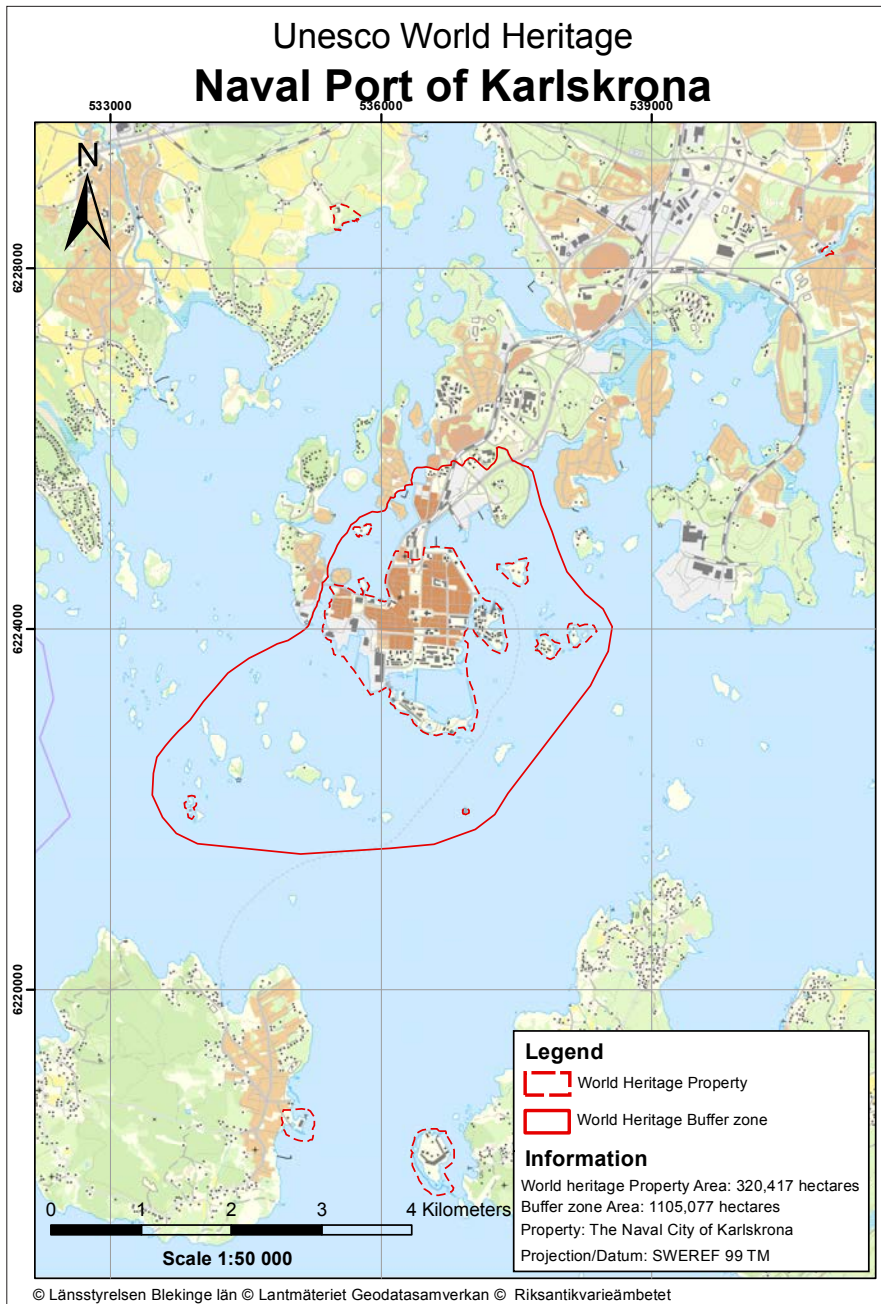
## Integrity

All properties nominated for inscription on the World Heritage List shall satisfy the conditions of integrity. Integrity is a measure of the wholeness and intactness of the natural and/or cultural heritage and its attributes. Regarding historic towns such as Karlskrona, relationships and dynamic functions essential to their distinctive character should be maintained.

In the case of Karlskrona this regards the still active naval base and its relationship to the civilian town, to a large extent.

The description of the World Heritage Property integrity from the rSoOUV:

*"All the elements necessary to express the Outstanding Universal Value of the Naval Port of Karlskrona are located within the boundaries of the 320.417-ha serial property, including the city of Karlskrona and its grid plan; the naval dockyard and harbour; the inner fortifications at Ljungskar, Mjølmarholmen, Koholmen, Godnatt, and Kurrholmen; the outer fortifications at Drottning-skars Citadel and Kungsholms Fort; and Skarfva Manor House and the Crown Mill at Lyckeby located in the naval port's environs. The boundaries of the property adequately ensure the complete representation of the features and processes that convey the property's significance, and there is a 1,105.077-ha buffer zone. The property does not suffer unduly from adverse effects of development and/or neglect. While the city plan is preserved and the original vision for and planned functions of the city are still legible today, the majority of the property is part of a living urban environment facing continual pressures for change."*



The boundaries of the World Heritage property. Image source: Länsstyrelsen Blekinge



# Breakdown of attributes - authenticity

## The continuity of the Naval base

The naval base is an integral part of the World Heritage declaration. The naval base has an unbroken continuity since the founding of the city and is still very much an active base, with an active shipyard. The modern industrial requirements can sometimes conflict with conservation purposes. These considerations are handled by the County administrative board.

Access to the naval base is restricted, and a large part of the heritage buildings that are directly linked to the World Heritage Declaration are thus not easily accessible. The generally increased military threat level in recent years have also limited access to images of the base online, as well as restricting photography of the property.

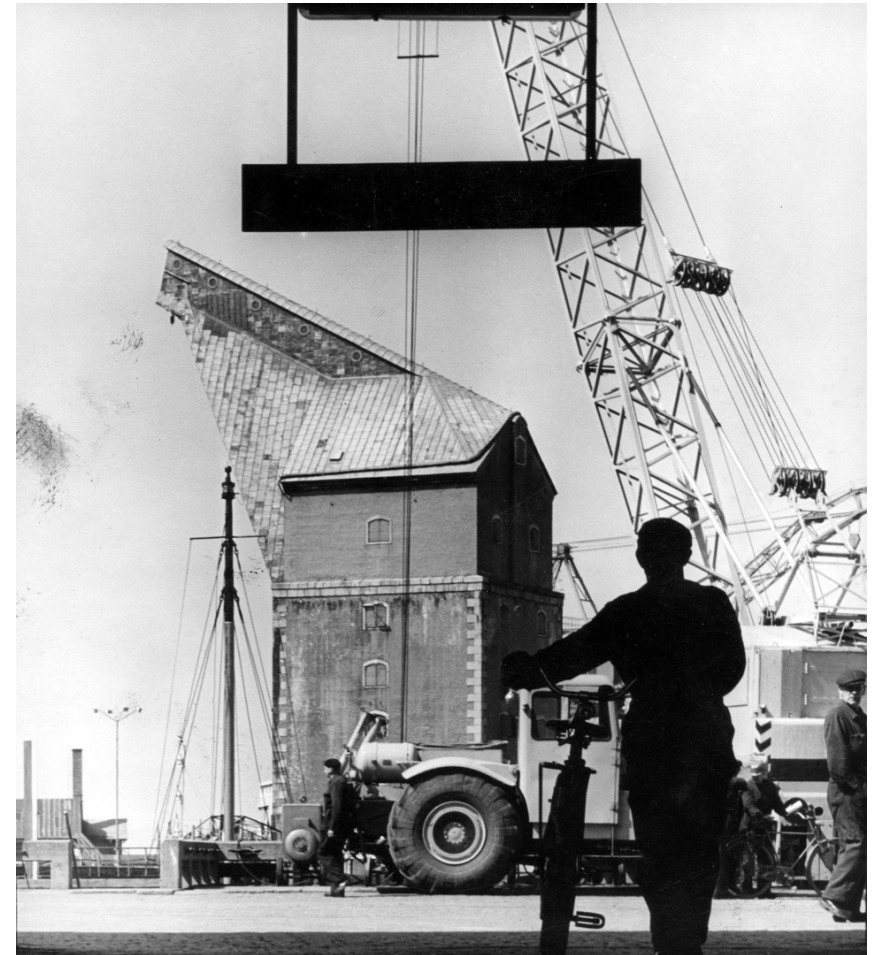
## Relevant quotations from the SoOUV

### *Brief synthesis*

“The Naval Port of Karlskrona, which includes installations that illustrate its subsequent development up to the present day, is the best preserved and most complete of the surviving European naval cities. This is partly because it has not been affected by wars or battles, and partly because it continues to operate as a naval base.”

### *Authenticity*

“In 2005, when Karlskrona became Sweden’s national marine port, its role as an active naval port was strengthened. The Swedish authorities believe that the continued use of this historical environment will provide the best protection, and will assist in maintaining the property’s authenticity. Several older buildings and constructions in the port area have been restored in order that they may be reused.”



The mast crane, built in 1803. Picture taken in the 1970's. Image source: Blekinge museum.

# Breakdown of attributes - authenticity

## Well-kept buildings and historic environments

Even though Karlskrona suffered from recurring city fires during the centuries and large-scale demolitions in the middle of the 20th century, a large number of heritage buildings and environments survive, both in the civilian city as well as in the naval base. Some examples of the older historic environments that convey this attribute are Grevagården with its garden, the Skärva Manor, the Crown Mill, the Five Finger Dock, Vasaskjul, and the areas surrounding the fortifications.

Stortorget is to some extent authentic in its setting; the city plan is mainly preserved, as well as the most important buildings that define the square such as the churches and the former city hall. The buildings that surround the square are from different time periods, giving the square a rather mixed setting in relation to the qualities that define the World Heritage property. The main components of the square in relation to the attribute are the churches, the grid plan, the former city hall, the wooden houses and their gardens that dominate the blocks south and west of the square, as well as more modern environments like the library and its well preserved courtyard.

Karlskrona has a large number of nationally listed buildings protected by Swedish Ordinance for State-owned Listed Buildings, as well as the Historic Environment Act (1988:950). The listed buildings are marked and described in Bebyggelseregistret, a national registry of listed buildings provided by the Swedish National Heritage Board. The map on the right shows an excerpt from the map showing nationally listed buildings on Trossö and adjacent islands. Apart from the nationally listed buildings, a number of other heritage buildings are protected in various detailed city plans. Every building on Trossö, Stumholmen and Björkholmen is described in the Karlskrona kulturmiljöprogram, an internal document used by the building permit administrators. The document describes qualities from a heritage perspective that must be considered when a building is subject for change.

## Relevant quotations from the SoOUV

### *Brief synthesis*

“The Naval Port of Karlskrona, a serial property situated on a Baltic Sea archipelago in south-eastern Sweden, is an extremely well-preserved example of a naval city from a time when major European powers secured their positions largely through war and battles at sea.”



Excerpt from Bebyggelseregistret, Swedish National Heritage Board. Nationally listed buildings are marked with a small house symbol. [www.bebyggelseregistret.raa.se/](http://www.bebyggelseregistret.raa.se/)

“The Naval Port of Karlskrona, which includes installations that illustrate its subsequent development up to the present day, is the best preserved and most complete of the surviving European naval cities. This is partly because it has not been affected by wars or battles, and partly because it continues to operate as a naval base.”

### *Authenticity*

“The Naval Port of Karlskrona is authentic in terms of its location and setting, forms and designs, and materials and substances, as well as some of its uses and functions. Various kinds of cultural environments as well as individual buildings are largely preserved.”

# Breakdown of attributes - authenticity

## The square as a public space

Stortorget has been the centre of the civilian city since its founding. Major civilian administrative buildings, religious buildings and other services have been located at the square for centuries. It is important that the square is given the preconditions to continue to function as a public place, even after the importance of religious services, physical shops and markets continue to decline.

The square wasn't paved until mid-1800's, forcing some trade to be conducted in other parts of the city. However, the popular yearly market Lövmaknaden has been held at the square for at least 250 years.

At times, the focus point of the civilian city life has shifted; during the second half of the 19th century, the centre was somewhat shifted to the north with the inauguration of the redesigned Hoglands park in 1860. In the early 20th century, the main business street Ronnebygatan was the main focus when a large number of new buildings with shops on the bottom floors were built after the city fire of 1887. In more recent times, the focus has somewhat shifted to the north-west of the square, when different malls were inaugurated during the latter part of the 20th century.

As described in the Statement of OUV, "the Swedish authorities believe that the continued use of this historical environment will provide the best protection, and will assist in maintaining the property's authenticity". This applies not only to historic buildings, but to the historic uses of the two main parts of the city: the naval base as well as the civilian city.

This entails that the naval base continues to be an active part of the Swedish defense, which at times can be at odds with the preservation of the historic environments.

The continued use of the historical environment in relation to the civilian city means reusing buildings that no longer serve their original purpose, as well as facilitating the use of environments that no longer function the way they were intended.

The continued use of the civilian city, although not concerning national security, can sometimes also be at odds with the preservation of historic environments. The Swedish planning and building act is designed to weigh different interests against each other when a change is planned, and a number of sections are designed to protect the cultural heritage values of existing buildings.



Stortorget during the Lövmaknaden of 1982. Image source: Blekinge museum.

## Relevant quotations from the SoOUV

### *Brief synthesis*

"The city was designed by Quartermaster General Erik Dahlbergh in a grid plan with Baroque features, and included the complete range of necessary functions: naval base facilities, military fortifications and defences, a shipyard, a civilian city with trade and administration, supply areas, areas for provisions, and

residential areas for groups from various levels of society."

### *Authenticity*

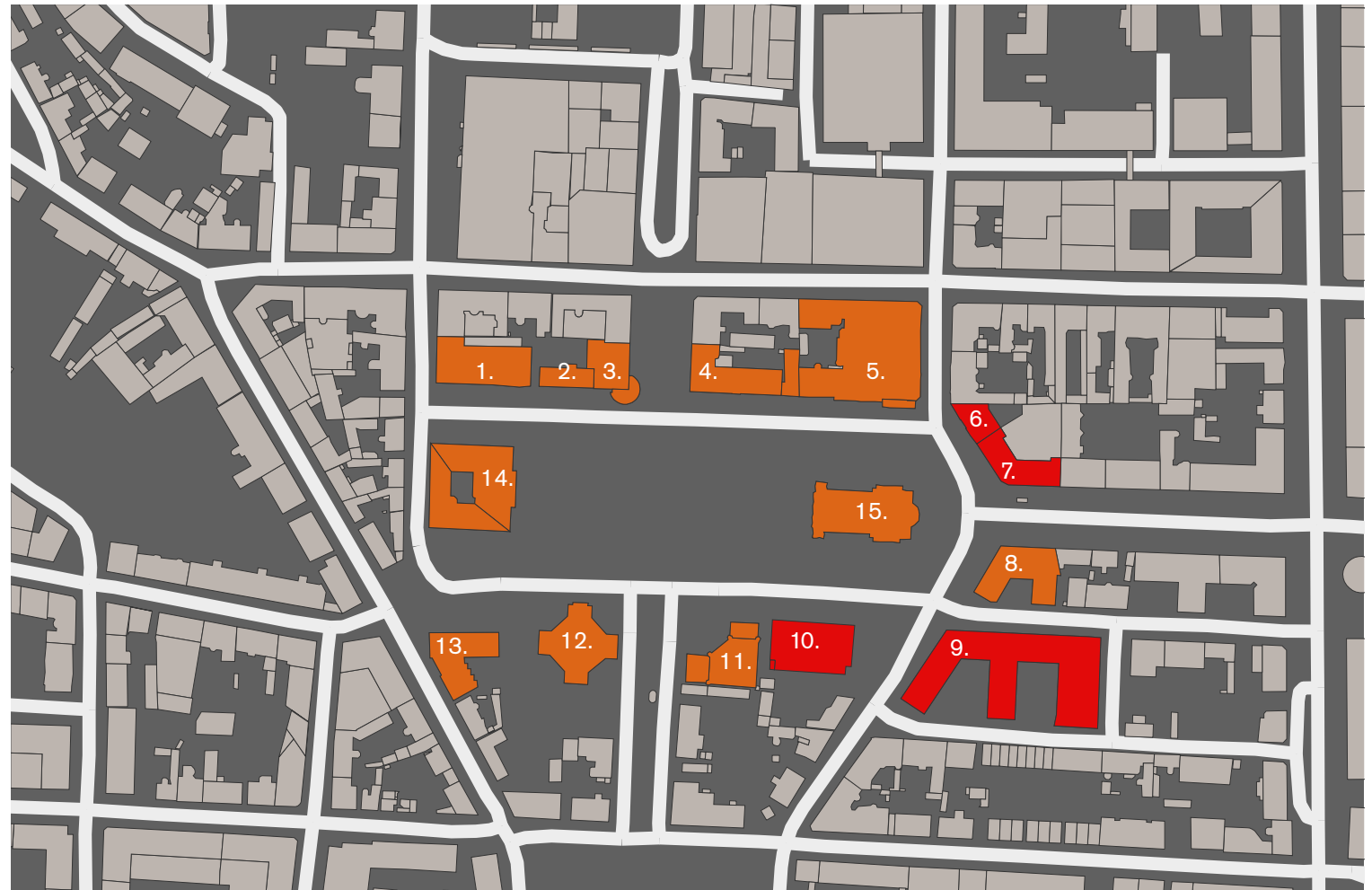
"The Naval Port of Karlskrona is authentic in terms of its location and setting, forms and designs, and materials and substances, as well as some of its uses and functions. Various kinds of cultural environments as well as individual buildings are largely preserved."

# Breakdown of attributes - authenticity

## The square as a public space

The buildings that are located on and by Stortorget are mainly public, as discussed previously, with a few exceptions. A public building is here defined as a publicly accessible building, such as the churches, or a building serving public interests, such as the former headmaster building. Although all buildings around the square have publicly accessible premises, buildings that are mainly housing/not accessible are marked in red below.

1. Concert house - 1939
2. Former headmaster building - 1790
3. Magistraten 16 - 1903
4. Öresund 1 - 1790/1913
5. The City hotel - 1890
6. Sheldon 29 - 1942
7. Sheldon 1 - 1972
8. The Military Home - 1951
9. Hjulhammar 20 - 1961
10. Former Post Office - 1942
11. Water castle 1863
12. The Holy Trinity Church - 1709
13. The City Library - 1959
14. Former City hall - 1798/1905
15. Fredrikskyrkan - 1744



Public or semi-public buildings around Stortorget, marked in orange. Buildings that are not accessible or containing mostly housing are marked in red.

Image source, all historic images on the five following pages: Blekinge museum. Photographer unknown, unless otherwise stated. All recent photographs: Mattias Eklund, februari 2022.

# Breakdown of attributes - authenticity

## The square as a public space



1.  
Concert house  
Built in 1939 in a modernist style, consisting of two rectangular blocks, clad in yellow brick and marble. Built on a plot where the previous buildings were destroyed in the city fire of 1909. Well preserved exterior.



2.  
The former headmaster building  
Built in 1790 after the city fire the same year. Has been used as offices for various municipal administration. Well preserved exterior.



3.  
Magistraten 16  
Built in 1901 in an Art Nouveau/Neo Rococo style. Rebuilt in the 1920's in a Neo Baroque style. Minor additions towards the square from the 2000's. Generally well preserved exterior from the 1920's.



Concert house in the middle. 1950's.



The former Headmaster building in 1896. Photo: Hugo Smitt.



Magistraten 16, early 1900's. Foto: David Fritiof Källman.

# Breakdown of attributes - authenticity

## The square as a public space



4.  
Öresund 1  
Built in 1790 after the city fire, survived the city fire in 1887 that claimed most of the neighbouring buildings. Extensively rebuilt and redesigned in 1913 in a national romantic style. Well preserved exterior from 1913.



5.  
The City hotel  
Built in 1890 in a neo renaissance style after the city fire of 1887 claimed the previous building on the site. Well preserved exterior.



6.  
Sheldon 29  
Sheldon 29 is an apartment building built in 1942. Replaced a wooden house from 1790. Exterior has undergone distorting changes.



Öresund 1 before 1913.



The City Hotel in 1964.



Sheldon 29 in the 1990's.

# Breakdown of attributes - authenticity

## The square as a public space



7.  
Sheldon 1  
Sheldon 1 is an apartment building built in 1972. Replaced a neo renaissance building from the 1890's. Generally well preserved exterior.



8.  
The Military home  
Built in 1951 in a neo realist/neo classicist style, yet still unmistakably built in the 1950's. Façade in brick, slated roofs covered with copper.  
  
Replaced three wooden houses from the 1790's and one brick hous from the 1800's.



9.  
Hjulhammar 20  
Built in 1961 in a late modernist style with brick façades and slated roofs. The building is large and covers most of the block. Contained the police station for some time. Replaced an entire block of mainly wooden houses from the 1790's.  
  
Somewhat preserved exterior.



Sheldon 1 in the 1990's.



The Military home in the 1950's.



Hjulhammar 20. 1977.

# Breakdown of attributes - authenticity

## The square as a public space



10.  
Former Post Office  
Built in 1942 in a neo realist style. Replaced two wooden houses from 1790. Rebuilt in the 1980's. Façade towards the square is generally well preserved, other façades altered. Interior remodeled entirely.



11.  
The Water Castle  
Built in 1863 in a French Normandy castle style to accomodate the water supply problem the city struggled with since its founding. The façades are clad with limestone. Additions were made in 2008 when the property was redesigned to be a restaurant/art gallery. The building is nationally listed and has a well preserved exterior, apart from the additions.



12.  
Holy Trinity Church  
Built in 1709 in a baroque style by Nicodemus Tessin the younger to accomodate the German-speaking population of Karlskrona. Severely damaged in the city fire 1790, rebuilt following the original plans but simplified in a more neoclassical style by Olof Tempelman. The characteristic portico towards the square was added in 1862, the same year the Campanile belonging to the church was demolished. Very well preserved.



Post office. 1950's.



Water Castle. 1939.



Holy Trinity Church, early 1950's.

# Breakdown of attributes - authenticity

## The square as a public space



**The City Library**  
Built in 1959 in a characteristic Swedish 1950's style; the modernist principles about form following function combined with a higher grade of detailing and variation in the architectural expression. The façades are clad with plaster and marble. Well preserved exterior and interior.



**The Former City hall**  
Built in 1798 after the city fire of 1790. Extensively rebuilt in 1905 when the characteristic portico towards the square was added and in 1915 when three wings were added towards the back of the building. Nationally listed building, well preserved exterior and interior.



**The Church of Frederick Building**  
began in 1720, inaugurated in 1744. Plans were drawn by Nicodemus Tessin the younger, and the church is a prime example of Roman Baroque in Sweden. Well preserved exterior.



The city library in 1986. Photo Christer Peterson/Sydöstran



The Former City hall before 1905.



The Church of Frederick. 1950's.

# Breakdown of attributes - authenticity

## Location

The location-attribute is largely connected to the active naval base, that has operated at the very same spot since the 1680's. The attribute is mainly manifested in the fact that the naval base is located in the same place it has been since the founding of the city.

Furthermore, the city's location on islands in an archipelago is unique. The location was ideal from the perspective of a fortified naval base; however, the rough topography of the main island Trossö proved to be a challenge to tame regarding the civilian city; due to economic reasons, blasting to even out the topography was uncommon, and houses were built with a cellar directly on the mountain, giving the majority of the civilian city a rather rural character, a great contrast to the official and public buildings. Despite the changes the city has gone through, these conditions are still present. The attribute is connected to the fact that some of the most prominent buildings in the civilian city was placed at the highest point of Trösso, Stortorget. The "lesser" buildings of the civilian city were built on the sloped grounds between the high point and the sea, emphasizing the topography. This order was more or less followed until the late 19th century, when technological

advancements in the art of house building as well as new economic conditions for the civilian middle class resulted in increased heights of nonpublic buildings across the island. In the following century, new building projects have generally not considered this order, as the 12-story high building at Skanze 7, built in 1973 on one of the lower points of Trossö, demonstrates.

However, on some parts of the island, the original order of building placement is still readable.

## Relevant quotations from the SoOUV

### *Authenticity*

"The Naval Port of Karlskrona is authentic in terms of its location and setting, forms and designs, and materials and substances, as well as some of its uses and functions."



Karlskrona in 1815. The sloped topography of the main island was distinctive until the early 20th century.  
Ink drawing by Johan August Anckarsvärd (1783-1874). Uppsala University Library

# Breakdown of attributes - authenticity

## Forms and designs, materials and substances

Despite the numerous city fires and large-scale demolitions the civilian city has suffered, some historical environments are preserved since the 17th and 18th century, especially in the parts that are connected to the naval base, and buildings and environments located on the smaller islands within the World Heritage property surrounding Trossö.

The civilian city displays a large and diverse building stock, that shows the history of the city from the late 17th century until today; from the monumental baroque buildings that were a product of the Swedish Empire, stately city farms built by the prominent citizens on Trossö to the small characteristic wooden houses on Björkholmen originally built for the craftsmen and seamen; the exponents of modernity of the 19th century such as the prison, hotels, theaters, boulevards and parks; the richly ornamented stone buildings at Ronnybygatan manifesting the rising civilian middle class at the end of the 19th century; the modernist buildings representing the growing wealth and socially focused economy of the mid-20th century; the post-modernist buildings built around the housing exposition in the 1990's; as well as recent architecture.

Since Karlskrona is a living urban environment, the attribute relates to buildings and historic environments of high authenticity from across its lifespan. It is not confined to a certain period of time. As an example, the aircraft hangars on Stumholmen are obvious parts of the World Heritage Site but have no actual connection to the Baroque city. They are good examples of how the city has evolved over time to respond to new needs.

As an example of more modern buildings, the Naval Museum (Marinmuseum), an essential part of the World Heritage site, was built in 1997, with an extension built in 2014. Both buildings are architecturally typical for their time.

## Relevant quotations from the SoOUV

### *Brief synthesis*

“The Naval Port of Karlskrona, which includes installations that illustrate its subsequent development up to the present day, is the best preserved and most complete of the surviving European naval cities.”



The aircraft hangars (the yellow buildings top left) and Marinmuseum in the foreground. Photo: Visit Karlskrona/Håkan Linder.

### *Authenticity*

“The Naval Port of Karlskrona is authentic in terms of its location and setting, forms and designs, and materials and substances, as well as some of its uses and functions.”

### *Integrity*

“While the city plan is preserved and the original vision for and planned functions of the city are still legible today, the majority of the property is part of a living urban environment facing continual pressures for change.”

# Breakdown of attributes - integrity

## Preserved city plan with block structure

One of the main features of Karlskrona is its well-preserved Baroque grid plan and block structure, dating back to the founding of the city. The diagonal streets create sharp angled city blocks, accentuated by the buildings located in these parts.

The large-scale demolitions that took place during the 20th century has weakened the original grid plan.

Through a conscious approach to new additions in the city environment, the experience of the original grid plan can be strengthened.

## Relevant quotations from the SoOUV

### *Brief synthesis*

“The city was designed by Quartermaster General Erik Dahlbergh in a grid plan with Baroque features, and included the complete range of necessary functions: naval base facilities, military fortifications and defences, a shipyard, a civil city with trade and administration, supply areas, areas for provisions, and residential areas for groups from various levels of society. The city’s architects and planners were inspired by precedents such as the Venetian Arsenal, the French naval city of Rochefort, and the English city of Chatham. Karlskrona in turn influenced subsequent naval bases and cities of this type.”

### *Integrity*

“All the elements necessary to express the Outstanding Universal Value of the Naval Port of Karlskrona are located within the boundaries of the 320.417-ha serial property, including the city of Karlskrona and its grid plan”



1742. The diagonal streets cuts through the grid plan surrounding Stortorget. The planned palace of the Admiral had been replaced by the bastion Wachtmeister, thus making Stortorget the central point of the civilian city. Image source: Krigsarkivet



The corner building on the block Rådmannen. The sharp angle visualizes the original city plan and its diagonal streets cutting through the grid plan. The building is nationally listed.

# Breakdown of attributes - integrity

## The clear demarcation of the historic city

Karlskrona is situated in the Blekinge archipelago, and for the first centuries, the civilian city was mainly contained on Trossö.

Access to the city was mainly confined to the sea roads for the first few hundred years, with only wooden bridges connecting Trossö and Pantarholmen between 1682-1839. Eventually the city outgrew the original islands, growing north at the end of the 19th century and onwards. Large portions of the sea between Trossö and the mainland was filled, especially during the 20th century.

Despite these changes, the historic city is still clearly defined once one enters Landbron south of the railway station. The name Landbron itself refers to the bridge.

## Relevant quotations from the SoOUV

### *Brief synthesis*

“The Naval Port of Karlskrona, a serial property as a naval base.”

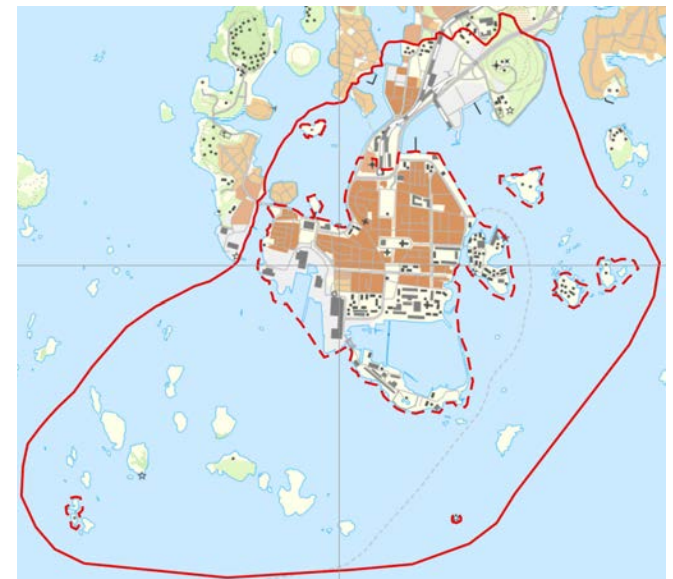
### *Integrity*

”All the elements necessary to express the Outstanding Universal Value of the Naval Port of Karlskrona are located within the boundaries of the 320.417-ha serial property, including the city of Karlskrona and its grid plan”

“The boundaries of the property adequately ensure the complete representation of the features and processes that convey the property’s significance”



Karlskrona in 1684.



Karlskrona present day, word heritage boundaries are marked on the map.

# Breakdown of attributes - integrity

## Historic city silhouette

The historic city silhouette is an integral part of the World Heritage Property, even though it is not directly referred to in the statement of OUV. On the following pages, through a number of historic and contemporary images depicting the city from the north, the emergence of the current skyline is discussed.

## Relevant quotations from the SoOUV

”All the elements necessary to express the Outstanding Universal Value of the Naval Port of Karlskrona are located within the boundaries of the 320.417-ha serial property, including the city of Karlskrona and its grid plan”

”While the city plan is preserved and the original vision for and planned functions of the city are still legible today, the majority of the property is part of a living urban environment facing continual pressures for change”



Karlskrona from Bryggareberget, january 2022. Photo: Alexander Tiger.

## Breakdown of attributes - integrity

# Historic representations of Karlskrona skyline

1709

Due to the topographic conditions of Trossö, the main island of Karlskrona, the churches have dominated the skyline in all representations facing the island since the founding of the city. Some of the earliest images depicting the skyline are found in the images that were made as a preface for the engravings in the third volume of the *Suecia Antiqua et Hodierna*, a collection of engravings by Eric Dahlbergh. In the engraving to the right, engraved in 1709, the Trinity church (C. *Templum Germanicum*) and its campanile (D. *Campanile*, demolished in 1862) are the prominent buildings in the centre of the image. The Fredrik Church was not built when the preface to the engraving was drawn. The Admiralty Church (B. *Templum Admiralis*) is depicted as being as tall as the other church, which was not the case; the *Suecia Antiqua et Hodierna*-collection was a tool for propaganda, exaggerating the size of towns and buildings depicted. However, the buildings surrounding Stortorget in the late 1700's were few and low, making the Trinity church by far the most dominant building in the skyline.



Carlskrona versus meridiem  
Aveelen, Johannes van den, 1655-1727 (Engraver)  
Dahlbergh, Erik, 1625-1703 (Commissioner)  
Image source: Suecia Antiqua et Hodierna. Swedish Royal Library

# Breakdown of attributes - integrity

## Historic representations of Karlskrona skyline

**1783**

The view of the city from the mainland has been a popular motif to paint, and one of the older paintings is a watercolour by Elias Martin, in which Fredrikskyrkan and the Church of the Holy Trinity with its campanile almost alone constitute Trossö's silhouette. The artist was probably standing on Britas berg when he sketched the motif, with the land bridge that connected the city to the mainland in the foreground.

The painting was produced 7 years before the devastating fire of 1790, in which over 400 buildings were lost.

As the filling in of the gap between the mainland, Trossö and the small islets that lay between them, as well as the construction of later buildings around the turn of the century 1900, the view from this particular perspective has changed considerably.



*Utsigt af Carlscrona med Pantarholmen.* Watercolour by Elias Martin 1783.  
Image source: the Royal Library

# Breakdown of attributes - integrity

## Historic representations of Karlskrona skyline

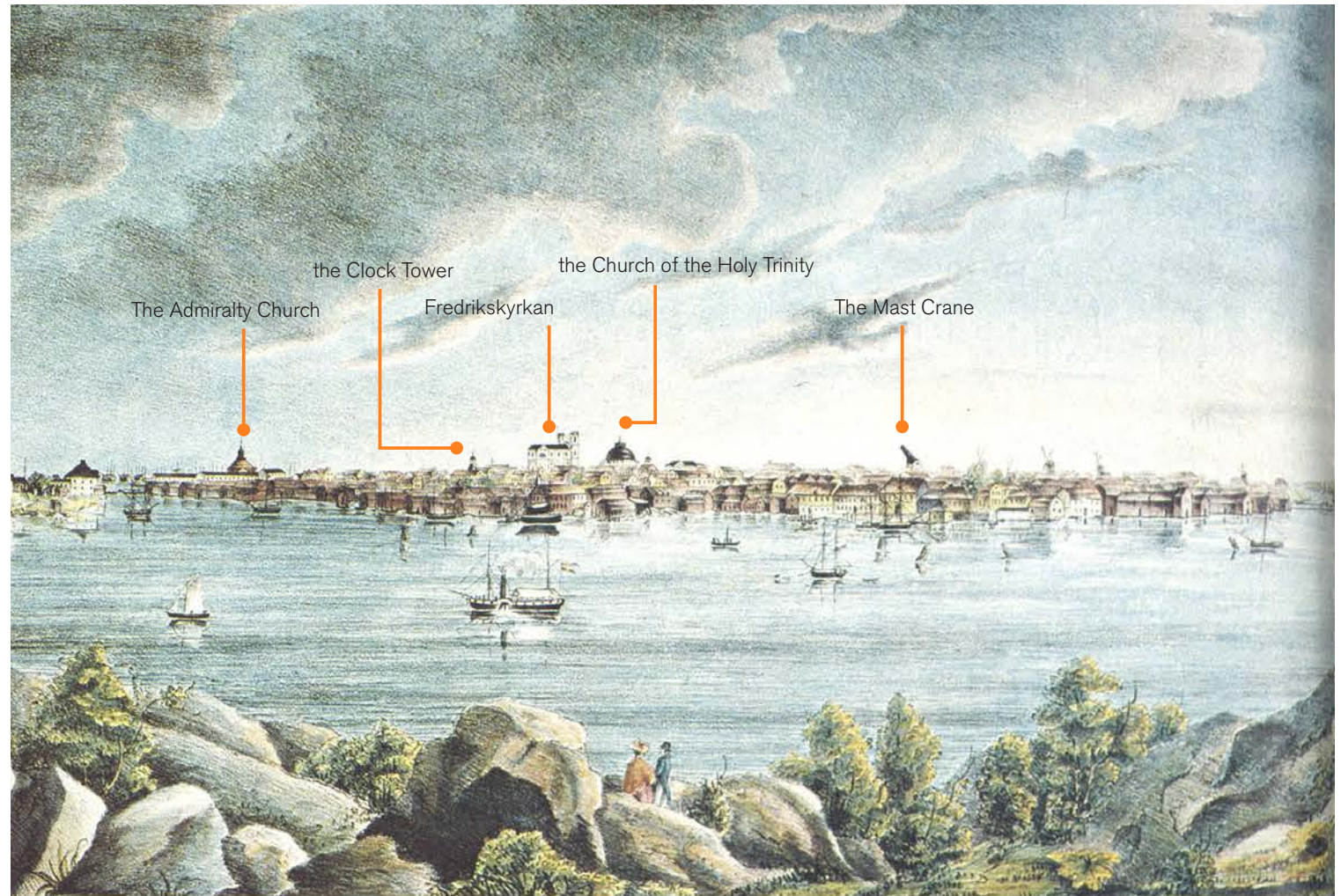
**1834**

The Lithography on the right was produced in 1834 by O. Andersson. The artist point of view is from Wämö, North of Trossö. To the very left in the image Stumholmen is visible.

To the middle-right the Mast Crane is visible. The crane was built in 1803-06 and is nationally listed since 1969.

The proportions are exaggerated as well as the large number of houses on Trossö. For example, the Holy Trinity Church is almost as tall as the Fredrik Church in the image, despite the new neoclassical dome from 1802 that was lower than its original one destroyed in the fire 1790.

However, the image still conveys an credible depiction on how the landmarks must have been experienced in relation to the low housing buildings that dominated the northern, civilian part of the city.



Karlskrona from Wämö 1834. Litograph by O. Andersson. Image source: Blekinge museum.

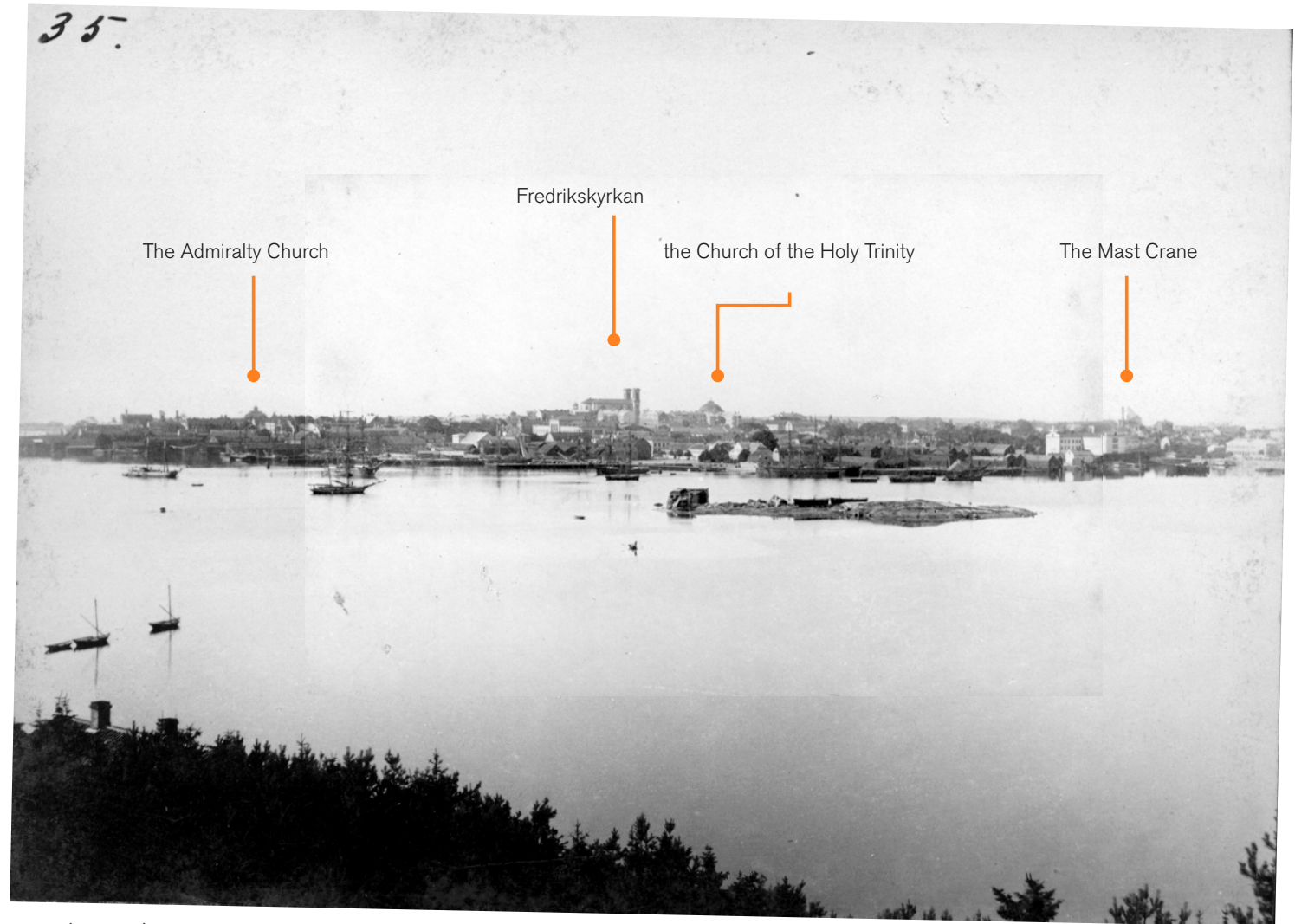
# Breakdown of attributes - integrity

## Historic representations of Karlskrona skyline

**1895**

An early photograph of the city by Karl Emil Karlson, who established his practice in the city in 1885. The photograph is taken from Bryggareberget, a famous vantage point with a good overlook of Trossö and the other islands.

After the northern part of central Trossö was struck by the city fire of 1887, modern brick and plaster buildings replaced older wooden houses north of the square. Some of these can be seen in front of and between the churches in the picture. The height of these were between 3-6 floors, but the tallest of the buildings from this era were built a few years later. At this time, the Fredrik church is still dominant in the view but everything but the dome of the Holy Trinity Church is obstructed by the new-built buildings in the Riksbanken block.



1895 (approx.). Photo: Karl Emil Karlson, Karlskrona. Image source: Blekinge museum

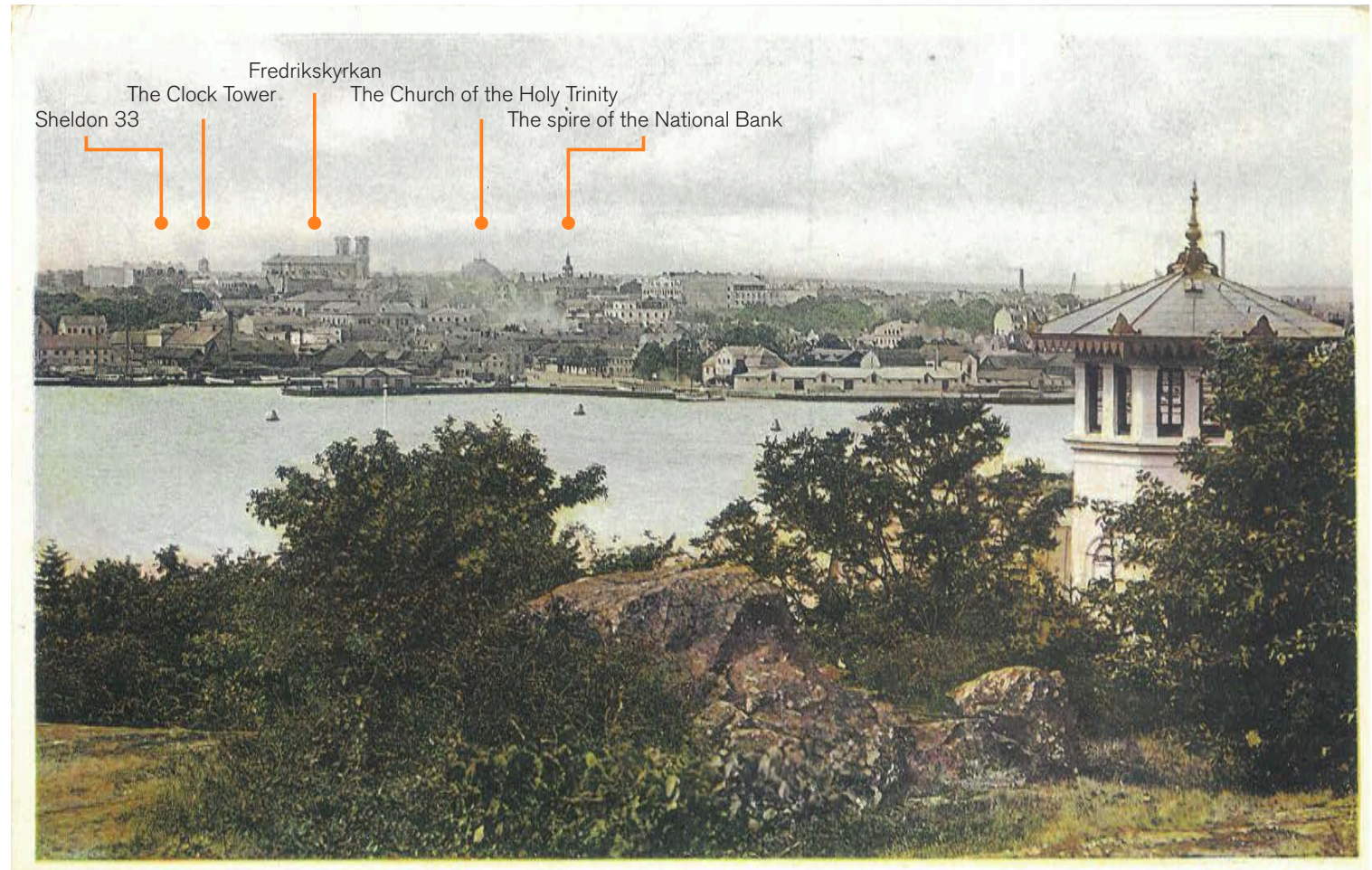
# Breakdown of attributes - integrity

## Historic representations of Karlskrona skyline

### 1910 (approx.)

A colourized, undated postcard from the early 20th century. The Art Nouveau building at Ronnybygatan 19, Sheldon 33, built in 1907 is visible to the left of the clock tower. The building was one of the tallest at its time and evens out the perceived slope of Trossö, where Stortorget is the highest point, and the buildings generally follow the topographical conditions down towards the sea shores. To the right of the Trinity Church, the tower of National bank (1903-04) is visible, an accent that contests the dominance of the Trinity church in the view.

The building closest to the camera to the right was designed by Helgo Zettersvall in the 1880s, and was very much noticeable from its surroundings due to its location and architecture. The building was popularly called *Synvillan*, a wordplay using the words *syn* (vision) and *villan* (the villa). The two words put together forms the word *Synvillan* (the illusion). The building was demolished in the 1960's.



1910 (approx.). Colorized postcard.

# Breakdown of attributes - integrity

## Historic representations of Karlskrona skyline

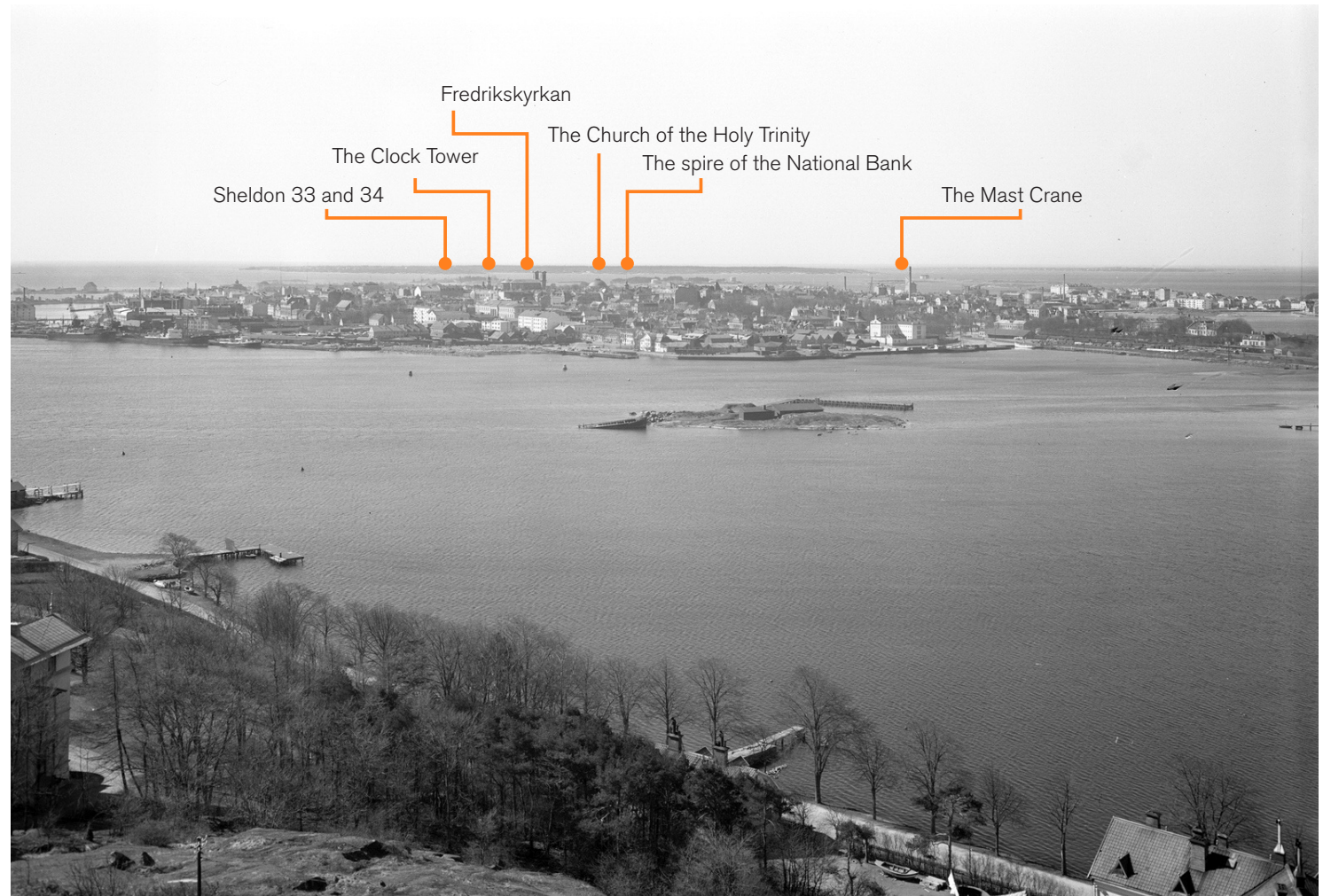
### 1940's

Another photograph from Bryggareberget, taken from a point slightly to the northwest compared to the previous picture. The villa *Synvillan* is visible in the lower left corner.

In the early 20th century, relatively high brick and concrete buildings were built around Ronnybygatan. Some of these buildings were banks built with expensive façade materials and roofs accented with towers, such as the National Bank building (1903-04) discussed in relation to the previous image. The Art Nouveau building Sheldon 33 was accompanied with an equally tall neighbour in 1936 when the modernist residential building on Sheldon 34 was built.

The skyline was also supplemented with high industrial chimneys visible to the left and right in the picture.

The small island in the middle of the picture, Hattholmen, became a part of the oil harbour when a large part of the sea between Trossö and the mainland was eventually filled.



1940's. Photo: Unknown. Image source: Blekinge museum

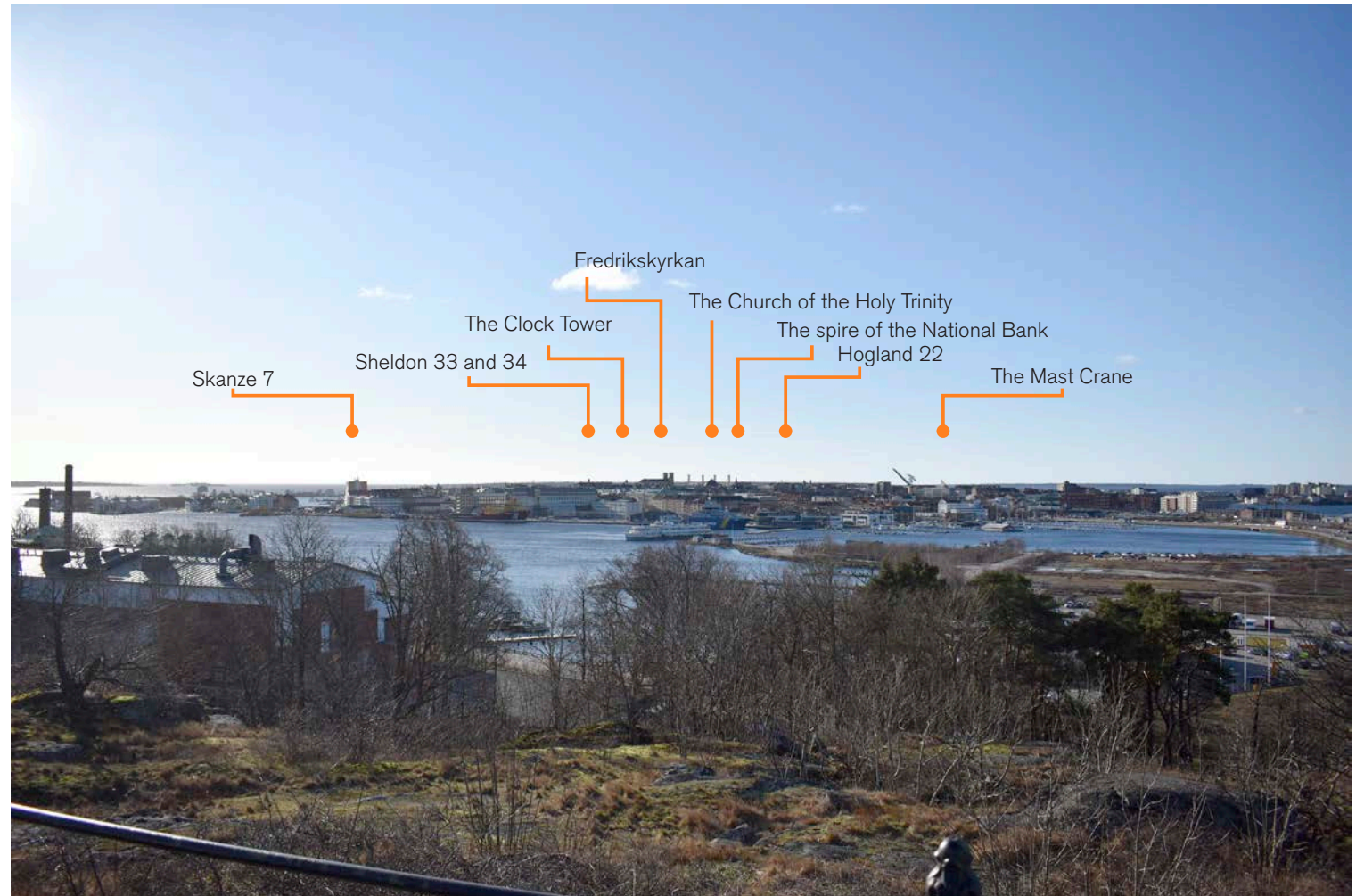
## Breakdown of attributes - integrity

### Current situation Karlskrona skyline

2022

The photograph was taken from Bryggareberget in 2022 and represents the current conditions.

From this lookout point, one still has a good view of mainly the civilian city. The spot is frequently visited by tourists for this reason. Karlskrona is, from this angle, a modern city with its many layers of heritage visible. In the central part of the city, the silhouette is still dominated by Fredrikskyrkan and the dome of the Church of the Holy Trinity, as well as Admiralty Clock Tower. As mentioned in previous images, residential and commercial buildings from the early 1900's have levelled out the effect of the solitary monumental buildings. Beyond the Church of the Holy Trinity, the Karlskrona Shipyard's buildings are noticeable, which despite having an impact on the older historical silhouette, also have a positive impact on the overall experience of the World Heritage attributes since both the civilian and naval city can be seen at the same time. To the left in the picture, the 12-storey residential building on Skantze 7 accents the eastern corner of Trossö. Built in 1973, it was originally planned to be 14 stories high, with an additional two equally high buildings in the vicinity.



# Breakdown of attributes - integrity

## Current situation Karlskrona skyline

### 2019

The photograph was taken from Bryggareberget in 2019 and represents a zoomed in perspective of the current conditions (no major changes has affected the silhouette since 2019).

As stated in the previous picture, in the central part of the city, the silhouette is dominated by Fredrikskyrkan and the dome of the Church of the Holy Trinity, as well as Admiralty Clock Tower. In front of them the residential and commercial buildings from the early 1900's with their noticeable copper clad towers and exposed firewalls are visible.

As a backdrop to the Church of the Holy Trinity, the Karlskrona Shipyard's buildings are dominant. At the far end of the picture, the greenery of Aspö marks the horizon.

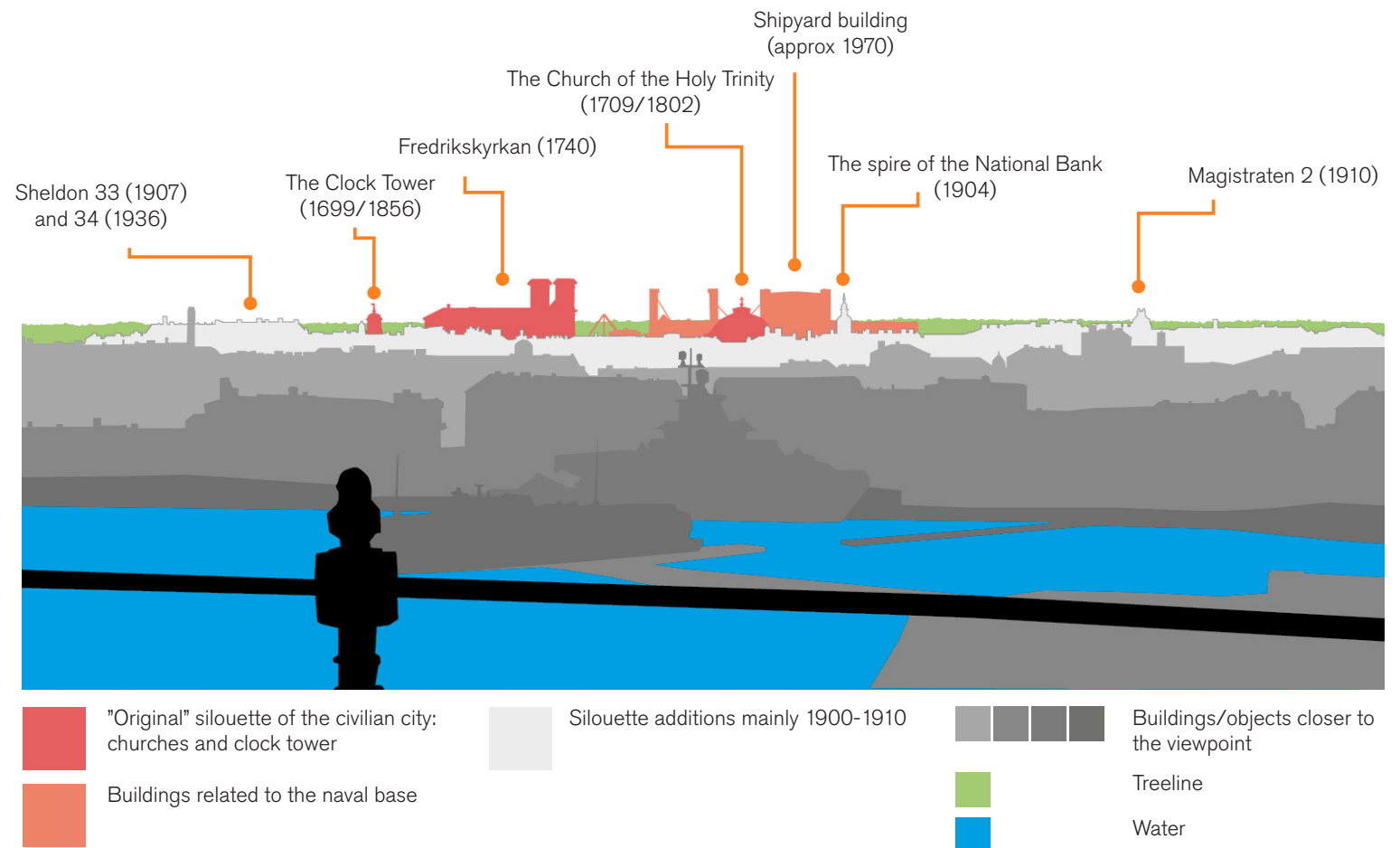


# Breakdown of attributes - integrity

## Current situation Karlskrona skyline

### Current situation - breakdown

In the illustration on the right, the silhouette has been broken down to its fundamental shapes and colour coded to visually enhance the characteristics, as well as the distances from the viewpoint. The purpose is to clearly identify the various elements that make up the silhouette, and more easily assess the impact an addition would entail.



# HERITAGE IMPACT ASSESSMENT

## Description of the proposed changes

### Background

The former Karlskrona Post Office has since 1988 been used as a health centre. In the spring of 2015, staff complained of health problems after working on the premises. The problems eventually forced the health centre to move to temporary facilities during the autumn of 2015.<sup>1</sup> The County Council's real estate department commissioned a technical investigation of the building. The investigation found extensive problems and deemed the building unfit for use.<sup>2</sup> The premises have since been empty.

Karlskrona municipality has been looking into the possibilities to build a new culture house since 2006.

Plans to build the new culture house in the Bonde block did not come through due to the County Administrative Board denying demolition of the building on Borgmästaregatan 6, a wooden house built in 1885.<sup>3</sup>

Since then, the plans have been turned towards the former Post Office. After preliminary investigations regarding the

possibilities to place the Culture house at its location, an architect competition was initiated in 2019.

### The proposal

The proposed building is designed by Dorte Mandrup A/S, the winners of the architect competition. The current proposal is a revised design, following criticism of the project from the Swedish National Heritage Board and ICOMOS. The proposal is described in the next part of this chapter.

### Description of the building proposed to be replaced

The former Post office was built in 1942, replacing two buildings from 1790 (a third adjacent one was demolished in 1973 to accommodate the postman bicycle parking). The building has gone through extensive changes in its interior and, to a lesser extent, exterior. Original doors and windows were replaced in 1984. Major interior changes were made in 1988 when the building was transformed into a health centre. The façade towards the square has to some extent kept its character, other façades and the interiors are distorted.

### Current condition and technical status

After complaints made by the staff at the health centre, the building was

closed due to hazardous conditions; a technical report conducted in 2016 by Conservator AB concluded the presence of carcinogenic polycyclic aromatic hydrocarbons, heavy metals, mildew, slack and deficiencies in ventilation.

The building is unfit for use in its current condition. The technical report recommended demolishing the building, or as an alternative, demolishing the interior down to its framework and comprehensive measures regarding its exterior walls, windows, roof, all floors including basement and attic, ventilation, and drainage.

### How does the former Post Office relate to the OUV?

The attributes described in the rSoOUV for the World Heritage property the Naval Port of Karlskrona are mainly connected to its features as a well-preserved example of a European naval city with a Baroque grid plan. Stortorget is a central point in the central axis of this plan.

The Post Office relates to this plan by respecting the shape of the block, a shape that comes from the earliest sketches at city level drawn by Tessin the Elder. The building also clearly defines a part of the southern boundary of the square, which the adjacent Water Castle does not. The

Post Office's original plans included an expansion to the east, which was never realized even though the building the expansion would replace was demolished in 1973. The effect was that the sharp angle of the block in its north-eastern corner was corrupted, thus blurring the sharpness of the diagonal street important to the Baroque layout. The building and its (original) function relate to the OUV by being a part of the civilian city that supports the naval base. Since the building is currently empty and in need of extensive measures to be restored to a usable condition, this value has been limited to its presence and visibility in the cityscape and the associations the building may give residents and former users of the building's previous functions.

In the appendix to the document *Guidance to Heritage Impact Assessments for Cultural World Heritage properties* (2011) A grading scale to determine the importance of an asset on a local, national, and international scale is presented. Since the context is World Heritage properties, the grading low does not necessarily mean that the asset valued has insignificant qualities.

The value of the asset is defined using the following grading scale:

1. "Trossö vårdcentral kan rivas", *Blekinge Läns Tidning* 2016-06-13

2. *Byggnadsteknisk utredning*. Conservator AB 2016-01-26

3. "140-åring i vägen för kulturhus", *Blekinge Läns Tidning* 2016-09-14

- *Very high*
- *High*
- *Medium*
- *Low*
- *Negligible*
- *Unknown potential*

Assets that qualify as Very high are "sites or structures of acknowledged international importance inscribed as of universal importance a WH property. / Individual attributes that convey OUV of the WH property. / Other buildings or urban landscapes of recognised international importance."

The former Post Office qualifies as Low: "Locally listed buildings. / Historic (unlisted) buildings of modest quality in their fabric or historical associations. / Historic townscape or built-up areas of limited historic integrity in their buildings, or built settings."

The Post Office was declared a building with cultural-historical value by the Blekinge County Museum in 1994 (locally listed). It has since been stripped of many of its qualities interiorly and exteriorly and lost its continuity as a Post Office which means it can be described

as a building with "modest quality in their fabric [...]"

As concluded in the technical review by ICOMOS, the retention of the building is not essential to retaining the OUV of the property, however, ICOMOS recommends the post office into account as a starting point for development.<sup>4</sup>

Since the façade towards the square is the part of the building that still has some of the original character, retaining the façade was considered at an early stage. This idea was however later rejected by the project group for architectural and cultural-historical reasons.

### Historic National Interest for Preservation

Karlskrona is designated as an historic national interest for preservation, meaning it is protected by the Natural Resources Management Act a chapter 3, paragraph 6.

*Motivation: County seat, the main station of the Swedish navy since the 1680s and one of Europe's best preserved examples of a naval city, that through lavish architecture, innovative technological facilities and a civilian city with surrounding fortifications and supply systems, demonstrates the ambitions of*

<sup>4</sup> technical review, Ref.: CLT/WHC/ EUR/21/13143

*the Swedish Great Power Era to expand and maintain a position of power in Europe and around the Baltic Sea. [The city] Clearly reflects the influence of governments behind urban formations in the 16th and 17th century. (Urban environment; county city, garrison town, Mill environment)*

The National Heritage Board has stated that the proposal does not endanger the values that the Historic National Interest describes, however the proposal has a negative impact on them.<sup>5</sup>

In the document that further describes the reasoning behind the motivation, the final chapter describes an overall assessment of sensitivity and durability of the city related to changes. The following quotes describes guidelines regarding Stortorget:

"The grandeur of Stortorget with the monumental character of the surrounding buildings is sensitive to additions or changes that reduce the grand openness of the square.

In the case of new development, public buildings or other open and accessible buildings should be prioritized around Stortorget over, for example, residential buildings. New buildings around the square should be designed with a high

<sup>5</sup> RAÄ yttrande, Dnr RAÄ-2020-1804, s.

architectural ambition and scale wise subordinate themselves to the churches and the town hall."<sup>6</sup>

<sup>6</sup> Fördjupat kunskapsunderlag för riksintresset för kulturmiljövård Karlskrona [K15], s. 38

# Description of the revised proposal

## General description

*This description is brief and focuses on the aspects related to the impact assessment. Please refer to the documents presented by Dorte Mandrup A/S for a more comprehensive description.*

The proposal entails the construction of a new Cultural Arts House, replacing the former post office at the main square Stortorget, on the corner of the Sjöstjerna block. The building is placed on the footprint of the current building, but also extends onto the undeveloped car park on the eastern edge of the block. The building is taller than the current one; its highest part is approximately 24,5 meters. The façade is semi-transparent, covered with a raster of glazed ceramic tiles with sandstone detailing, perforated with larger windows with oak frames. The ceramic elements are curved like concave abstracted baroque cartouches. Together with the glass sections of the façade, they create the building's semi-transparent cladding where the reflection of the glass and the glazing of the ceramics aim to reflect the surrounding buildings and the sky.

The highest point of the building is on the north-west corner, pointing towards the centre of the square. The wave-shaped roof alludes to the theatrical features of Baroque architecture, in the form of a stylized crown.

## Uses

The building hosts a diverse selection of culture related uses; the ground floor contains a black box, a World Heritage exhibition space, an art gallery, a tourist bureau, a café, a space that can be used as a small stage, as well as facilities. The second and third floor contains the library with its associated uses. The fourth floor contains the restaurant.



A rendering of the revised design. Dorte Mandrup A/S.

# Description of the revised proposal

## Revisions

Following the criticism expressed by the consulted experts at ICOMOS, the design proposal has been revised. The changes attempt to address the concerns regarding the height, external finishes, and contrast towards the historic environment.

### Adapted height of the building

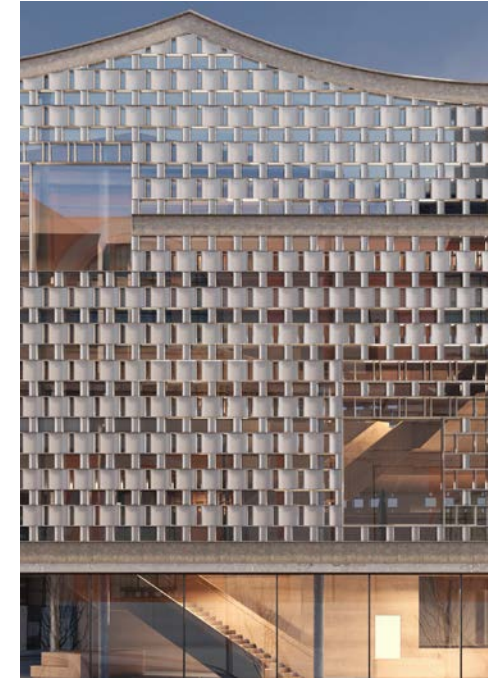
The northern façade, facing the square, has been lowered by 1-2 meters. The adapted proposal aims at a lesser impact on the historic silhouette visible in the long-distance views as well as in relation to the square and the churches. The volumes to the south have been lowered to ensure a better transition between the smaller scale of the buildings south of the building. The effect of the changes are studied in the following chapter.

### External finishes

Façade materials have been updated. Cornices has been added that use the same type of sandstone used in the churches, while the rest of the façade is clad with ceramic tiles that contrast the sandstone details while retaining the same colour. The colour palette and use of project specific high-quality materials aim to comply with the attribute the main square as a public space; the updated façade alludes to the public buildings around the square, both the baroque churches as well as the concert house and library but separates itself from the darker palettes of the adjacent non-public housing buildings.

### Volume proportions

Using the Golden Section as a principle, the volume has been adapted inspired by the baroque churches, while still retaining a contemporary expression. The added horizontal cornice separating the two floors aligns with the cornices of Fredrik Church and the Holy Trinity Church. The aim of this change is to comply with the attribute settings by lessening the contrast of the volume against the churches yet adding a new layer to the historically diverse main square.

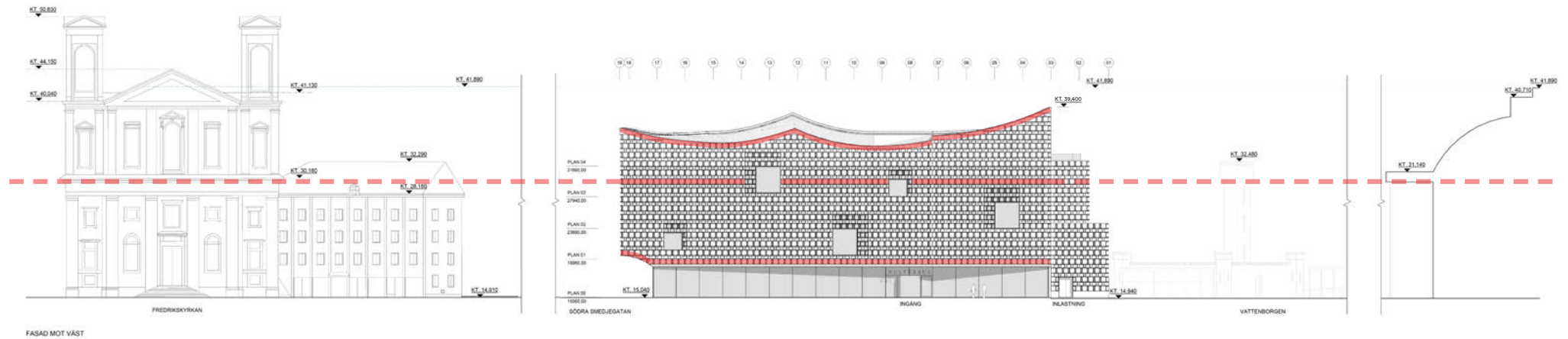


Ceramic panels: Double fire effect glaze ceramic tiles  
Cornice: Sandstone

# Description of the revised proposal

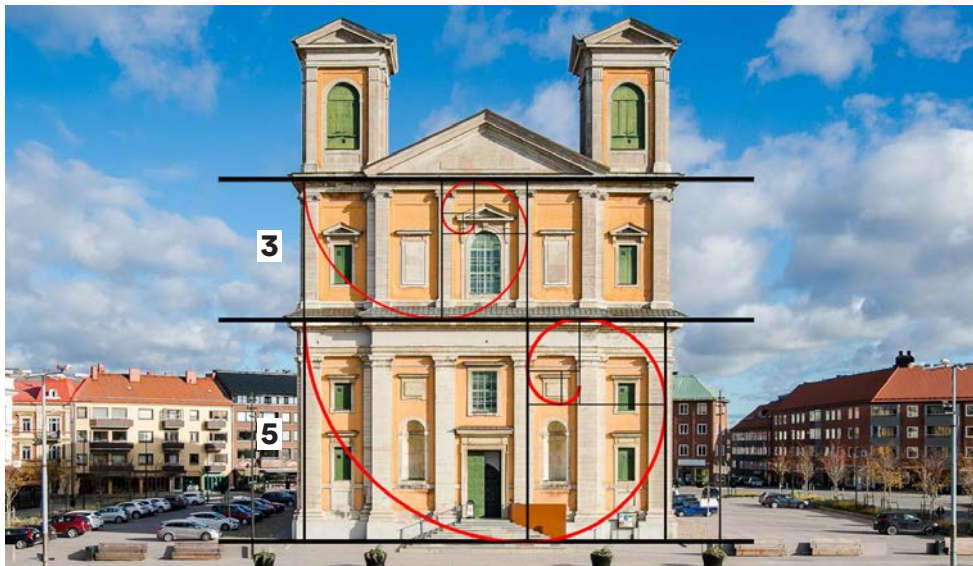
## Revised design

Cornice aligns with Fredrikskyrkan



## Frederikskyrkan

Analysis of proportions - golden ratio



## Revised design

Sandstone cornice at top, bottom and average golden ratio - vertical line thickened at facade kink



# Description of the revised proposal

## The proposed building in relation to the city grid plan

As discussed in the previous chapters, the plot is missing a component plan-wise since the demolition of the wooden house at the corner in 1973. The proposal aims to remedy this by adding a sharp angle to emphasise the contrast between the radiant street of Södra Smedjegatan and Stortorget, in the same way the buildings on the corners of Södra Smedjegatan - Östra Prinsgatan, and Borgmästaregatan - Västra Prinsgatan.



The City Layout before the demolition of the corner building in the Sjöstjerna block in 1973.



The current City Layout.



The current City Layout with the proposal added.



"Uncle Rubens" house on the corner of the block before being demolished in 1973. Image from the book Karlskrona 300 år: 1679-1860.



The current state of the corner.



The corner in the proposal. Visualization: MIR

# Viewpoints to assess impact - sequence

The entrance from the north is the only land road into Trossö. In 1681-82, the first wooden bridges were built that connected the island with the mainland. In 1839 a stone bridge was inaugurated, which marked the start of the successive filling of the gap between the island and the mainland. The sea roads to Karlskrona have since the founding of the city dominated the communications to the city, but gradually the land road became more important, especially after the construction of the railway (1874) and the inauguration of the motor highway Österleden (1971).

The view of the city from the mainland has been a popular motif to paint, and one of the older paintings is a watercolour by Elias Martin, in which Fredrikskyrkan and the Church of the Holy Trinity almost alone constitute Trossö's silhouette.

As the gap between the mainland and Trossö was filled and the construction of later buildings around the turn of the century 1900, the silhouette from the north has changed. However, the earliest landmarks are still possible to experience.

On the following pages, the experience of the silhouette along Österleden from the north is examined in a sequence of images. The purpose is to examine to what extent the proposal entails a

change in the experience on arrival to the city by road.

The views are taken from Google Streetview and have been compared to the city's 3D model.

## Summary of impact

In the revised proposal, the northern façade is lowered by 1-2 meters, and is no longer visible from the selected viewpoints.

The impact from the entrance is assessed to be neutral.



The inauguration of Österleden, seen from the vantage point at Bryggareberget 1971-12-06. Photo: Sydbild, Karlskrona. Image source: Blekinge museum

## Viewpoints to assess impact - sequence



At the south eastern part of Pantarholmen, Trossö's silhouette begins to appear, with Fredrikskyrkan as the central point (marked with a blue arrow). The proposed new building is not visible from the viewpoints.

## Viewpoints to assess impact - sequence



The closer one gets to the island, the oldest historic silhouette is supplemented with later additions such as Ericsson's factory building (1947, red arrow) and the prison (1851, green arrow). The proposed volume is hidden behind Fredrikskyrkan (blue arrow) in viewpoint 3. In viewpoint 4 the proposed volume is obscured by the buildings located in the blocks between Kungspan and Norra Smedjegatan.

## Viewpoints to assess impact - long distance



To study the impact of the proposal on the attribute *Historic city silhouette*, three long distance viewpoints have been selected: one from the water and two from land. The viewpoints are chosen by the municipality and the photographs are taken from places where the volume of the proposal can be seen; the proposal is visible from more places from the water, but the selection fell on a view that can be seen from the Aspö ferry. The Poland ferry goes further east, but the experience of the view has been considered to be equivalent. In the previous version of the HIA, the viewpoint photographs were taken with zoom lenses. In this version of the HIA these photographs have been kept, but the additional viewpoints have been added that more accurately conveys the current experience and the impact the proposed change would entail.

### Summary of impact

The impact of the proposed volume in the viewpoints from land is limited; the volume is visible, but the historic city silhouette is still largely intact. From the viewpoint from the water, the proposal is assessed to have a negative impact since the dominance of the churches is somewhat contested by the added volume. The impact is assessed as slight.

## Long distance viewpoint 1 - from the ferry to Aspö - using a zoom lens

Current view



Proposal



The viewpoint photograph is taken from the Aspö ferry, between bastion Hafstrun and bastion Kungshäll. The Church of the Holy Trinity and the towers of Fredrikskyrkan are visible above the buildings, which from this view largely consists of listed buildings with a connection to the World Heritage Property, both from the perspective of the civilian and naval city. Buildings visible in the foreground are (from the left) the county residence, built in 1911 and a nationally listed since 1993. To the right of the residence is the Callerholm Swiss villa, and behind it the von Otterska residence, both built in the 18th century before the city fire in 1790 and both nationally listed.

Further to the right closest to the water is Hollströmska magasinet from the 1780's, with its current appearance from 1889, nationally listed since 1982. In between the previously mentioned, several Art Nouveau and modernist apartment buildings can be seen that have been highly valued in the city Cultural-Historical building directory. To the right of Hollströmska magasinet is Batalion Sparre, whose nationally listed school and barracks buildings previously belonged to the Navy, and therefore have a direct connection to the Naval city and the World Heritage attributes.

Attributes that are potentially affected are

- *Historic city silhouette*

### Impact assessment

From this viewpoint, the proposed building is visible between the two churches. The architectural expression of the proposal with a vaulted, to some extent canvas-like roof, is noticeable in the view. Most of the roof is slightly lower than the housing buildings in front of it to the right, with its tip reaching the same height as the chimneys. The previous proposal was assessed to affect the attribute Historic city silhouette negatively to a moderate to large effect; the proposal would contribute to a flattening of the silhouette, and make the main landmarks slightly less prominent, although the effect would be indirect. The current proposal has

been lowered and the effect is that it appears as an extension of the roof line of the buildings in front of it, while its tip marks it as something different. The proposal still has a negative effect on the silhouette, but the magnitude is assessed as slight.

## Long distance viewpoint 1.2 - from the ferry to Aspö

Current view



The viewpoint photograph is taken from the Aspö ferry, without a zoom lens, to more accurately convey how the city silhouette is experienced from the ferry.

The marine base part of the city, to the left in the picture, has been blurred.

Proposal



### Impact assessment

The impact assessment on the previous page is considered relevant to this montage as well.

## Long distance viewpoint 2 - from Bryggarberget - using a zoom lens

Current view



The viewpoint photograph is taken from Bryggarberget, northeast of Trossö, and probably the most frequented viewpoint by tourists (see the *Historic representations of Karlskrona skyline* chapter earlier in this document). From this lookout point, one has a good view of mainly the civilian city. The silhouette is dominated by the Admiralty Clock Tower, Fredrikskyrkan and the Church of the Holy Trinity. The view of the mentioned buildings is somewhat contested by the bank buildings around Ronnebygatan from the beginning of the 20th century, and residential buildings from the same period. Beyond the Church of the Holy

Trinity, the Karlskrona Shipyard's buildings are noticeable, which despite having an impact on the older historical silhouette, also have a positive impact on the overall experience of the World Heritage attributes due to the fact that both the civilian and naval city can be seen at the same time. Attributes that are considered to be affected are

- *Historic city silhouette*

Proposal



### Impact assessment

The proposed volume is visible between the Clock Tower and Fredrikskyrkan. The attribute *Historic city silhouette* is affected somewhat negatively when the rather undisturbed profile of Fredrikskyrkan is disrupted; the proposed volume almost appears to be an extension from the apse. The lowered revised proposal stays below the treeline in the distance, making the Clock Tower and Fredrikskyrkan the only entities that rise above it in this part of the silhouette.

Impact from the view is considered to be limited; the historical silhouette as it is experienced today is still legible.

## Long distance viewpoint 2 - from Bryggarberget



The viewpoint photograph is taken from Bryggarberget, without a zoom lens, to more accurately convey how the city silhouette is experienced from the viewpoint.



### Impact assessment

The impact assessment on the previous page is considered relevant to this montage as well.

## Long distance viewpoint 3 - from Blå port - using a zoom lens

Current view



The viewpoint photograph is taken from the Blå port. In this view, Fredrikskyrkan dominates the silhouette, while the Church of the Holy Trinity has been somewhat obscured by the buildings in the block Riksbanken, built after the city fire of 1887.

Attributes that are considered to be affected are

- *Historic city silhouette*

Proposal



### Impact assessment

The proposed volume can be seen immediately to the right of Fredrikskyrkan. The attribute *Historic city silhouette* is affected somewhat negatively when the rather undisturbed profile of Fredrikskyrkan is disrupted; the proposed volume almost appears to be an extension from the church. In the revised proposal, this effect is lessened. Impact from the view is considered to be limited; the historical silhouette as it is experienced today is still legible.

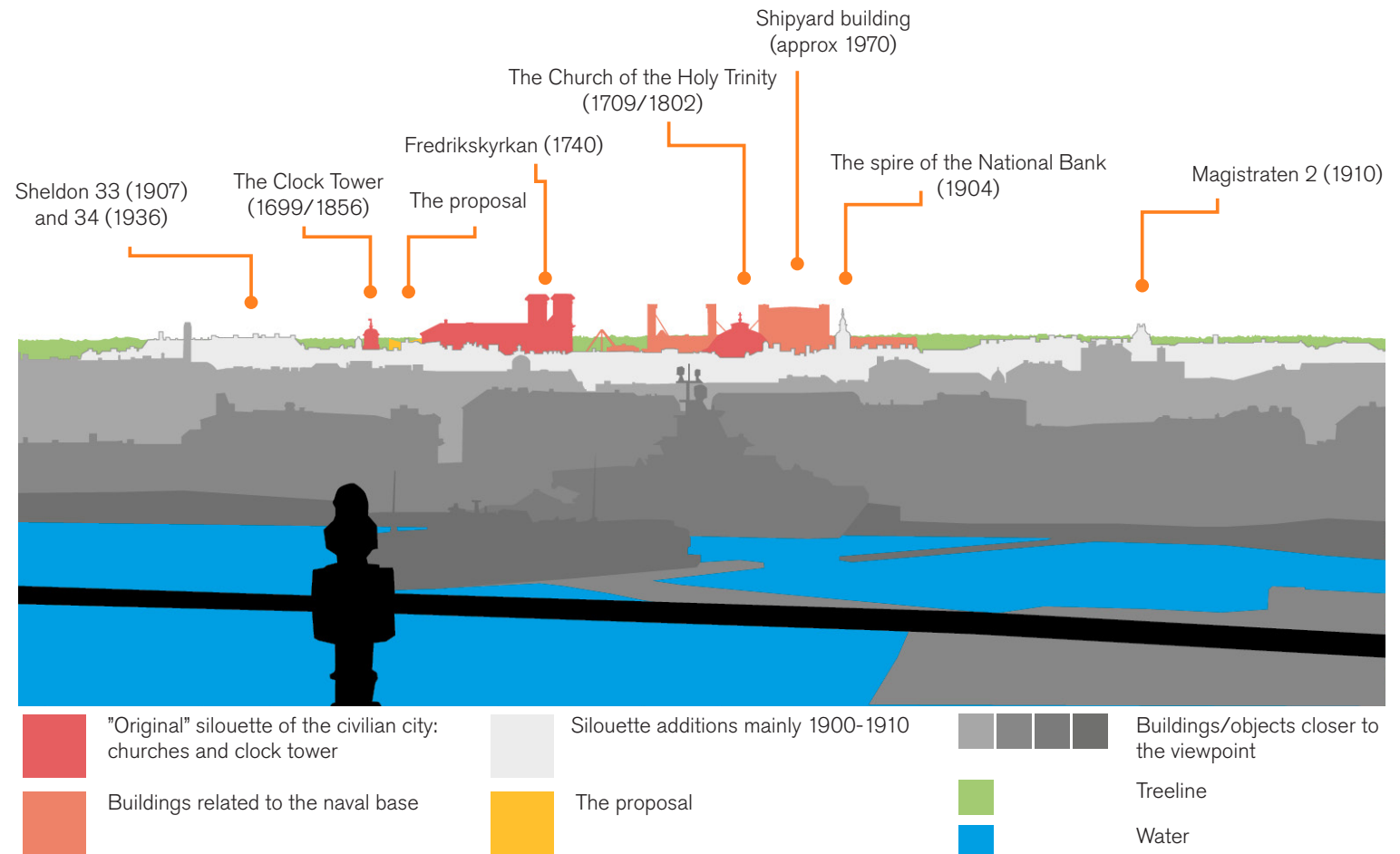
# Viewpoints to assess impact - long distance

## Proposal - breakdown

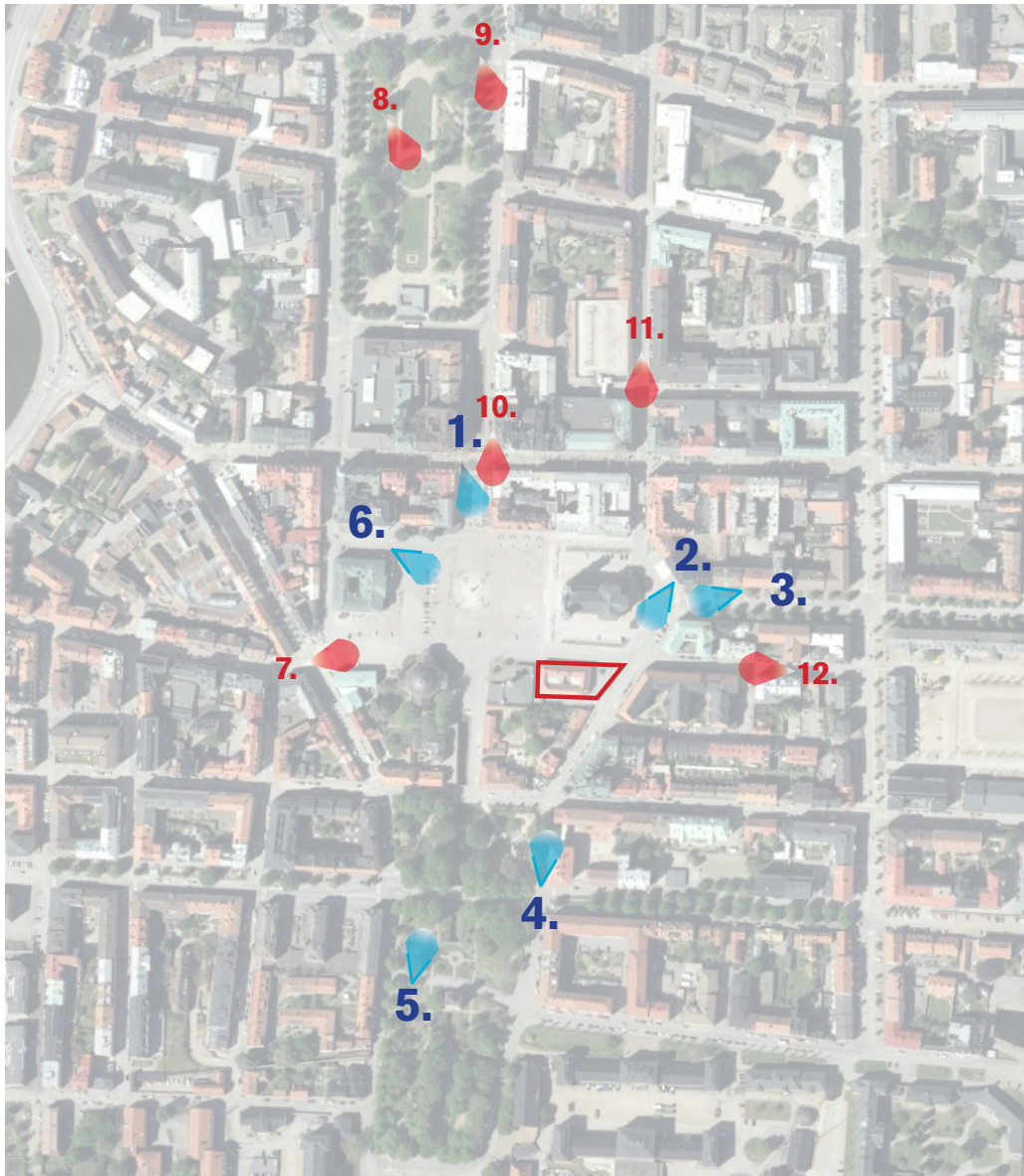
In the illustration on the right, the silhouette has been broken down to its fundamental shapes and colour coded to visually enhance the characteristics, as well as the distances from the viewpoint.

The purpose is to clearly identify the various elements that make up the silhouette, and more easily assess the impact an addition would entail.

In this image, the proposal is marked in yellow. It is visible to the left of the apse of Fredrikskyrkan. The proposal is below the treeline and mainly obscured by the buildings in front of it, thus making it a part of the lower skyline and no longer in direct conflict with the buildings that represent the “original” silhouette or the Naval base.



## Viewpoints to assess impact - short distance



To assess the impact on the proposal on a shorter distance, six photo montages have been created in which the proposed building is more or less visible. The sites are more or less well frequented. The numbers refer to the descriptions of the images in the following pages. Viewpoints where the proposal is not visible are marked in red.

## Viewpoints to assess impact - short distance 1 - View from Klaipedaplatsen - current situation



Current view

Klaipedaplatsen serves as an entrance to the square from the north. From the viewpoint one can see the The Church of the Holy Trinity, the Water Castle, the statue, the Admiralty Clock Tower and the wooden houses in the Sjöstjerna block. Beyond the former Post Office the tower of the Zackrisson House is visible, one of the city's most well-preserved Art Nouveau houses built in 1906.

A new visually prominent exponent in the square space could, if insensitive in design, have a negative effect on the architectural qualities of Stortorget.

Attributes that are considered to be affected are

- *Well-kept buildings and historic environments*
- *The square as a public space*

## Viewpoints to assess impact - short distance 1 - View from Klaipedaplatsen - proposal



The proposed volume is noticeable in the view next to the Water Castle. The attribute of *well-preserved buildings and historical environments* is negatively affected on the basis that the former post office disappears and that the buildings behind it are obscured entirely. The impact is considered to be moderate; the revised proposal has been lowered by 1-2 meters facing the square, and the roofline appears as a continuation of the eaves of the building to the left. The attribute *Stortorget as a public space* is positively affected by the addition of a public building with high architectural ambitions, visible from the viewpoint.

## Viewpoints to assess impact - short distance 2 - View from the Tourist Office - current situation



Current view

The viewpoint photograph is taken from the tourist office at the southwestern part of the Sheldon block. From the view, the proposed development site has a high visibility. Until 1973, there was a small wooden building on the corner of the block, which clearly marked the shape of the block and thus the readability of the grid plan.

Attributes that are considered to be affected are

- *Well-kept buildings and historic environments*
- *The square as a public space*
- *Preserved city plan with block structure*

## Viewpoints to assess impact - short distance 2 - View from the Tourist Office - proposal



The additional volume from this viewpoint is perceived as a new, dominant piece in the area's ensemble of buildings. Due to the topographical conditions, Fredrikskyrkan still dominates as it continues to be perceived as significantly larger than adjacent buildings, the proposed volume included. The wooden buildings behind the proposed volume in the Sjöstjerna block are obscured to some extent but are still possible to experience along Södra Smedjegatan. The revised proposal has lowered the volume that faces the wooden houses to the south which is evident in the montage.

The sharp corner of the proposed volume towards the square adds a positive reinforcement of the experience of the attribute *Preserved city plan with block structure*.

The revised design adds a sandstone cornice, that divides the façade using the Golden Section, intended to mirror the division between the lower and upper parts of the church façade.

## Viewpoints to assess impact - short distance 3 - View from Kyrkogatan - current situation



Current view

Kyrkogatan is part of the east-west axis that is important for the city layout. Fredrikskyrkan acts as a visual background visible from Stumholmen, and the street is important through the visual connection between some of the naval and civil city's most important landmarks (Slup- and barkaskjulet and Fredrikskyrkan respectively). From Kyrkogatan, the proposed development site is visible only relatively close to Stortorget, hence the chosen viewpoint. The brick building on the left is the Military Hostel, designed by Arthur von Schmalensee in 1951, and through its original function, it has a connection to the naval city of Karlskrona and thus the World Heritage attributes. From the chosen point, the Church of the Holy Trinity is also visible.

Attributes that are considered to be affected are

- *Well-kept buildings and historic environments*
- *The square as a public space*

## Viewpoints to assess impact - short distance 3 - View from Kyrkogatan - proposal



The proposed volume can be discerned beyond the Military Hostel on the left. From the chosen viewpoint, the impact on the experience of the World Heritage attributes is assessed as slight.

## Viewpoints to assess impact - short distance 4 - View from the intersection Alamedan - Amiralitetstorget - current situation



The view is taken from the intersection Alamedan - Amiralitetstorget, where Fredrikskyrkan is visible beyond the lower wooden buildings in the Sjöstjerna block. Immediately to the right in the picture the former Higher Education Institution for girls built in 1895, with a recent brick extension behind it. Beyond the extension is the Zackrissonska house from 1906. The tower of this building is located on the corner of the block and marks the intersection of Södra Smedjegatan and Östra Prinsgatan, which is important for the original city layout.

Attributes that are considered to be affected are

- *Well-kept buildings and historic environments*

## Viewpoints to assess impact - short distance 4 - View from the intersection Alamedan - Amiralitetstorget - proposal



The proposed volume rises behind the wooden houses and covers the apse of Fredrikskyrkan. Impact on the attribute Well-preserved buildings and historic environments is assessed as negative since the historical line of sight is somewhat disrupted, as well as the visual connection between the wooden houses in the Sjöbjerga block and the church.

The topographical conditions in the specific view mean that the proposed building would need to be significantly lowered to reduce the impact. Such a measure and its impact on the building's possibilities to accommodate the cultural house's functions and the positive impact these functions have on the attribute *Stortorget as a public space* should in this case be set against at what extent the viewpoint is frequented by people.

## Viewpoints to assess impact - short distance 5 - view from the Admiralty Clock Tower - current situation



Current view

The view from the Admiralty Clock Tower is one of the city's more important views towards the north-south main axis in which several of the civil city's most important buildings are visible. In summer, however, the trees' foliage hides buildings that are located west and east of the axis, whereupon the selected viewpoint has been adapted so that it is angled between the trees towards the proposed development site.

The view is dominated by the old school buildings; the white building on the left is the school building itself, built in 1825. To the right of it the red-coloured gable of the teacher's residence is visible. Behind it to the left is an apartment building from 1911, and behind it Fredrikskyrkan is visible. Visible at the far end of the square is the office and residential building from the 1970's in the southwest corner of the Sheldon block. The latter has no connection to the OUV and its attributes.

Attributes that are considered to be affected are

- *Well-kept buildings and historic environments*

## Viewpoints to assess impact - short distance 5 - View from the Admiralty Clock Tower - proposal



From the chosen viewpoint, the proposal means a significant change compared to the current situation. Fredrikskyrkan is more or less completely obscured from the view, and the proposed volume conveys a dominant character in relation to the wooden houses in front of it. Impact on the attribute *Well-kept buildings and historic environments* are assessed as negative. The magnitude of the impact is considered large.

## Viewpoints to assess impact - short distance 6 - View from the Town Hall - current situation



Current view

The viewpoint photograph is taken from the Town Hall stairs angled towards the former Post Office. Buildings that are visible in the view from the left Fredrikskyrkan (1744), a residential building in block Hjulhammar (1962), the former Post Office (1942), a residential building in block Ehnemark (1903), the Water Castle (1863), a well-preserved wooden residence with a courtyard (1792) and the Church of the Holy Trinity (1709/1791).

From this specific view, any additional volumes on the site of the former Post Office site will be considerably noticeable. An additional volume at this location will mean a significant addition to the square's ensemble with a great visual impact. The size of the square means that it has a sort of resilience towards additions since the churches are perceived as dominant, but it is important that added volumes are subordinated to them in terms of height and that the architecture is of a high quality.

Attributes that are considered to be affected are

- *Well-kept buildings and historic environments*
- *The square as a public space*

## Viewpoints to assess impact - short distance 6 - View from the Town Hall - proposal



From the chosen perspective, the negative impact on the attribute *Well-preserved buildings and historic environments* is considered to be moderate due to the fact that the Post Office is replaced and thus also the low scale inherited from the older wooden buildings that the Post Office itself replaced. The revised design adds a sandstone cornice, that divides the façade using the Golden Section, intended to mirror the division between the lower and upper parts of the church façade. From this viewpoint, this design gesture is especially noticeable.

The attribute Stortorget as public space is considered to be positively affected by the cultural house's potential to create a more vibrant square for more hours of the day, where public buildings would constitute a larger proportion of the buildings surrounding the square than at present.

## Viewpoints from where the proposal is not visible



The photograph is taken at the corner of Hantverkaregatan and Borgmästarregatan, facing east towards the square. Distance to the proposed site is approximately 175 m.



The photograph is taken at Hoglands park, facing southeast. The towers of Fredrikskyrkan are visible behind the former bank building. Distance to the proposed site is approximately 435 m.



9. The photograph is taken close to Landbron, on the corner of Östra Vittusgatan and Norra Kungsgatan facing south. Distance to the proposed site is approximately 470 m.



10. The photograph is taken just north of the corner of Ronnebygatan and Norra Kungsgatan facing south. Distance to the proposed site is approximately 175 m.



The photograph is taken at the corner of Stenbergsgränd and Norra Smedjegatan facing south. Distance to the proposed site is approximately 175 m.



The photograph is taken from Fortifikationsgatan facing west. Distance to the proposed site is approximately 145 m.

# Summary - Heritage Impact Assessment

## Which identified heritage attributes are at risk?

Identified attributes that are relevant to this investigation are:

### Attributes connected to authenticity:

- *The continuity of the Naval base*
- *Well-kept buildings and historic environments*
- *Stortorget as a public space*
- *Location*
- *forms and designs, materials and substances*

### Attributes connected to integrity:

- *Preserved city plan with block structure*
- *The clear demarcation of the historic city*
- *Historic city silhouette*

## Assessment of the proposed building impact on the OUV

The continuity of the Naval base

The proposed change does not affect the attribute directly or indirectly. It does not affect the port area or its continuity as a marine base.

Well-kept buildings and historic environments

The proposed change affects the former post office, locally listed in 1994 as a building of cultural historical value. The in-depth study conducted in 2017 concluded that the cultural historical values are restricted to its façade towards the square, that still has elements of the original architecture. As stated in the ICOMOS technical review, the retention of the building is not essential to retaining the OUV of the property, even though ICOMOS recommends taking into account the post office as a starting point for development.

Vattenborgen, nationally listed in 1969, is the closest neighbour of the proposed building. The listing is limited to the building itself and states the following regulations:

“1. The buildings must not be demolished or rebuilt in its exterior without consent from the National Heritage Board.

2. The site must not be subject for considerable change without consent from the National Heritage Board.

3. The building must undergo required maintenance.”

The proposed change does not affect these regulations. However, the building is visually affected when the neighbouring building is replaced by a larger structure.

Fredrikskyrkan, north of the proposed site, is nationally listed as all churches in Sweden built before 1939. The proposal does not directly affect the regulations that the listing entails. However, the visibility of the church is obstructed from viewpoints south of the square.

South of the proposed site are a number of city farms and school buildings from the 1800's that are clearly classified as *well-kept buildings and historic environments*. These are affected indirectly by the vertically large structure the proposal entails, giving them a new backdrop from viewpoints south of the block.

The neighbouring building east of the proposal is affected visually, but does not convey any attributes connected to the OUV.

The proposed building affects the historic setting that Stortorget represents negatively by changing the relationship between Fredrikskyrkan and the wooden houses south of the square. The impact is assessed as moderate to large.

### Stortorget as a public space

The attribute *Stortorget as a public space* is considered to be positively affected by the cultural house's potential to create a more vibrant square for more hours of the day. This would mean that public buildings would constitute a larger proportion of the buildings surrounding the square than at present.

The square has been the centre of the civilian city since the founding of Karlskrona. The current uses that are in decline are a) the churches as places of worship, b) the square as a place for markets and c) physical shops.

Current uses that are on the rise are d) tourism, where the churches play a big part, e) physical meeting places that are not connected to shopping, and f) cultural activities related to the library. The Culture house aims to mitigate the negative effect of the changes a, b and c, by offering spaces related to the latter two uses described, as well as adding other public functions such as a concert

stage, and a restaurant. This facilitates the continued use of the square as a public space, which is a positive improvement in relation to that the former post office no longer is fit to use as a public building in its current state.

#### Location

The attribute *Location* is not affected by the proposed change; the building is located at the high point of the island and does not contribute to the flattening of the sloped topography.

#### Forms and designs, materials and substances

Regardless of what one thinks of the proposal's design, it has a high level of architectural ambition, with project-specific materials such as ceramic tiles and sandstone detailing that has been chosen with the ambition to create a dialogue with the monumental buildings on the square without sacrificing the contemporary character of the new building. The building proposed to be replaced, the former post office, had a relatively high level of architectural ambition at the time of its construction. Its design also had the ambition to create a dialogue with the local environment, despite its deviating façade material with yellow brick, and anomalous

roof shape. The architect Lallerstedt described the choice of façade materials in the following way: "the appearance of the building [is] also dependent on the material one currently has to work with. In this case, brick."<sup>1</sup> (Brick was one of the few building materials that were available in Sweden during the war).

The SoOUV describes the development of the city up to the present day and the high level of architecture in the city, not specified to a specific time period. The attribute is therefore assessed to not be affected; a formerly public building with a high level of architectural ambition is in the proposal replaced with a new, public building with a high level of architectural ambition. The authenticity of the attribute *forms and designs, materials and substances* are considered to be intact.

#### Preserved city plan with block structure

The attribute *Preserved city plan with block structure* is affected positively. Refilling the gap in the north-eastern corner of the block strengthens the visibility of the original city plan and recreates a component of the cityscape with continuity from the city's founding to 1973. By closing the block and

<sup>1</sup> Postalt i Karlskrona. Svenska Dagbladet 1942-09-12, s. 8

recreating the sharp angle, the visibility of the Baroque grid plan is strengthened at one of the points where it is the most visible, in the intersection between a radiant street and the city's central parade square. This action means a restoration of the plan's axiality and inherent drama.

The impact is assessed as moderate to large.

#### The clear demarcation of the historic city

The proposal is not considered to affect the attribute *The clear demarcation of the historic city*.

#### Historic city silhouette

The attribute *Historic city silhouette* is affected negatively since the proposed volume further flattens the historic dominance the Churches has had on the silhouette for centuries. The revised proposal has mitigated the effect that the original proposal had by lowering the tallest part of the building by 1-2 meters. From the long-distance viewpoints, the building is visible, but no longer in a overly dominant way. The impact is larger from long-distance viewpoints from the water, while the impact is lesser from the long-distance viewpoints from land. From Bryggareberget, the

vantage point that offers the best view of the city and where the silhouette is the most readable, the parts of the Culture house that are visible are below the tree line. This means that the building is not read together with the parts of the silhouette that reach above the tree line (the churches, the bell tower, parts connected to the naval base).

The combined impact is assessed as slight.

### Can these impacts be avoided, reduced, rehabilitated, or compensated?

The negative impact effects identified in this report are linked to the visual impact of the proposal from viewpoints mainly south of the square. A **reduced** height of the proposal means a reduced visual impact on the *well-preserved buildings and the historical environments* in the Sjöstierna block. However, a reduced height would mean that some of the required functions won't fit in the building, which would affect the positive effects that a cultural house has for the attribute *Stortorget as a public place*. In order to **compensate** for such an impact, these functions should, as far as possible, be accommodated in nearby public premises around Stortorget.

# Summary - Heritage Impact Assessment

## Discussion

As stated in the previous HIA, placing a culture house by Stortorget is considered to have a positive impact on some of the attributes of the OUV. However, the height of the proposed building is considered to have a negative impact on other attributes.

The previous HIA further states:

“Lowering the height of the proposed volume considerably without losing the functions the culture house is supposed to host, has proved difficult during discussions among the project team. A significant change in the existing proposal also entails the risk that the fundamental architectural ideas and actions that won the competition is watered-down to the point that only a ‘box’ remains. The location and historic context require a high level of architecture: a watered-down proposal would be problematic for other reasons, which would require an additional impact assessment.

An iconic building such as a culture house requires a certain amount of architectural expression, especially when the municipality is the developer (the latter is specified in the national architectural policy Prop. 2017/18:110).”

The revised proposal that this version of the HIA evaluates, set out to lower the height of the building as much as possible without sacrificing the fundamental architectural idea. The northern façade towards the square has been lowered by 1-2 meters and the southern part of the building has been reduced to lessen the impact towards the wooden houses in the Sjöstjerna block.

The building is still visible from the long-distance viewpoints, but no longer in an overly dominant way. The building is still experienced as dominant from certain viewpoints, especially from the south. However, the added elements, such as the corniches inspired by the principles of the Baroque churches, reduce the visual impact from the viewpoints closer to the building.

The revised proposal is at a point where further major revisions might distort the fundamental design. As stated in the technical review, ICOMOS considers that the positive impacts of the activation and cultural use of the site cannot outweigh negative impacts on OUV. However, a building containing the functions that a culture house requires, in an architecturally interesting shape, and at a vacant plot

in the central part of the city will most definitely entail some adverse impact on the OUV. The existing building has not been deemed essential for retaining the OUV by the County Administrative Board or ICOMOS, and the building is currently not fit for use without extensive remediation and reconstruction. These actions could be difficult to justify on the basis that the cultural-historical values of the building are only manifested in its façade facing the square, while the building otherwise has limited values. A replacement of the building is therefore highly likely. The in-depth knowledge base for the national interest states that “when adding new buildings to the square, public buildings or other open and accessible buildings should be prioritised around Stortorget over e.g. residential buildings. New buildings around the square should be designed with a high level of architectural ambition and subordinate to the churches and the former Town Hall in scale.”<sup>1</sup> This guideline is well in line with the attributes interpreted out of the RsoOUV document, with the addition that a new building could potentially strengthen the Baroque features of the city plan as well as Stortorget as a public space.

<sup>1</sup> Fördjupat kunskapsunderlag för riksintresset för kulturmiljövård Karlskrona [K15], s. 38

As stated in the Guidance on Heritage Impact Assessments, section 2-1-5, “Every reasonable effort should be made to eliminate or minimise adverse impacts on significant places. Ultimately, however, it may be necessary to balance the public benefit of the proposed change against the harm to the place.”

The relevant decision makers must decide if it is possible for the project to move forward in its current direction, as well as if it is in accordance with the relevant laws that regulate Heritage aspects.

If this is not possible, the process should be restarted.

# Impact Assessment Graph

	Positive					Negative			
	Very large	Large/very large	Moderate/large	Slight	Neutral	Slight	Moderate/large	Large/Very large	Very large
<b>Authenticity</b>									
<i>The continuity of the Naval base</i>									
<i>Well-kept buildings and historic environments</i>									
<i>Stortorget as a public space</i>									
<i>Location</i>									
<i>forms and designs, materials and substances</i>									
<b>Integrity</b>									
<i>Preserved city plan with block structure</i>									
<i>The clear demarcation of the historic city</i>									
<i>Historic city silhouette</i>									

# List of references

## Published material

Skogsberg, Jonas. *Svenska världsarv – från istid till nutid*. Växjö: Riksantikvarieämbetet/Naturvårdsverket, 2006

Hellström, Hans. *Postens byggnader genom tiderna*. Stockholm: Postfastigheter, 1996

*Karlskrona: en bebyggelseinventering*. Karlskrona: Kommittén för bebyggelseinventering i Karlskrona, 1970

Abrahamson, Nils (red). *Karlskrona: ett världsarv*. Karlskrona: Marinmuseum, 1999

Bo Swahn text; Sven-Olof Bergström foto. *Stortorget i Karlskrona*. Karlskrona: Skrivstugan, 1995

Hillbom, Rune, Langemark, Erik. *Karlskrona 300 år: en återblick i ord och bild. D. 1, 1679-1860*. Karlskrona: Abrahamson, 1979

Hillbom, Rune, Langemark, Erik. *Karlskrona 300 år: en återblick i ord och bild. D. 2, 1863-1930*. Karlskrona: Abrahamson, 1982

Wirén, Agnes. *Karlskrona 300 år: en återblick i ord och bild. D. 3, 1931-1973*. Karlskrona: Abrahamson, 1986

Svedberg, Olle. *Planerarnas århund-*

*rade. Europas arkitektur 1900-talet*. Stockholm: Arkitektur, 1994

Gunilla Lundahl, text; Nino Monastra, fotografi. *Arvet och framtiden: örlogshamnen i Karlskrona - förnyelse i världsarvet*. Eskilstuna: Fortifikationsverket, 2008

Örlogsstaden Karlskrona - ett världsarv. Karlskrona: Länsstyrelsen i Blekinge län, 1999

*Nordisk posttidskrift: tidskrift för posten i Norden: Danmark, Finland, Island, Norge, Sverige*. Gävle: Nordisk posttidskrift 1941. Nr 12

*Byggmästaren: tidskrift för arkitektur och byggnadskonst*. Stockholm: Bröderna Lagerströms förlag, 1942. Nr 22

## Unpublished material

*Historiska uppgifter kring gatu-, vägnamn och kvartersnamn i Karlskrona. Uppgifter insamlade under åren 1965 – 2005* av Leif Karlsson, Karlskrona. Kopierad och utgiven av Blekinge museum 2006. ISBN 91-974567-5-6

Application for Inclusion on the World Heritage List - 1997

## Archives

ArkDes ritningsarkivet

## Digital sources

Digtalt museum: [Digitaltmuseum.se](http://Digitaltmuseum.se)

Blekinge museum: [blm.kulturhotell.se](http://blm.kulturhotell.se)

Carlotta: [museum.helsingborg.se](http://museum.helsingborg.se)

Alvin: [alvin-portal.org](http://alvin-portal.org)

# Appendix

Appendix 1: *Naval Port of Karlskrona (Sweden)*, Retrospective Statement of Outstanding Universal Value (2011)

Appendix 2: Statement on reports concerning the post office and a planned cultural house in Karlskrona 2017-04-19, dnr 436-1503-17

## Naval Port of Karlskrona (Sweden) (871, 1998)

### Retrospective Statement of Outstanding Universal Value (rSOUV)

#### Brief synthesis

The Naval Port of Karlskrona, a serial property situated on a Baltic Sea archipelago in south-eastern Sweden, is an extremely well-preserved example of a naval city from a time when major European powers secured their positions largely through war and battles at sea. Founded in 1680 by King Karl XI and planned from the outset as a naval city, Karlskrona was built as a new base for the fleet of Sweden, a major power at that time. The city was designed by quartermaster general Erik Dahlbergh in a grid plan with Baroque features, and included the complete range of necessary functions: naval base facilities, military fortifications and defences, a shipyard, a civil city with trade and administration, supply areas, areas for provisions, and residential areas for groups from various levels of society. The city's architects and planners were inspired by precedents such as the Venetian Arsenal, the French naval city of Rochefort, and the English city of Chatham. Karlskrona in turn influenced subsequent naval bases and cities of this type.

In addition to the city's grid plan and built infrastructure, the serial property includes large parts of the island of Trossö, where the naval base and many of its environments and buildings are located; a number of inner and outer fortifications that surround Trossö, which were intended to defend the city and the naval base; and Skårfva Manor House and the Crown Mill at Lyckeby, satellites within this larger area that are representative of the hinterland. The Naval Port of Karlskrona, which includes installations that illustrate its subsequent development up to the present day, is the best preserved and most complete of the surviving European naval cities. This is partly because it has not been affected by wars or battles, and partly because it continues to operate as a naval base.

**Criterion (ii):** Karlskrona is an exceptionally well preserved example of a European planned naval town, which incorporates elements derived from earlier establishments in other countries and which was in its turn to serve as the model for subsequent towns with similar functions.

**Criterion (iv):** Naval bases played an important role in the centuries during which naval power was a determining factor in European *Realpolitik*, and Karlskrona is the best preserved and most complete of those that survive.

#### Integrity

All the elements necessary to express the Outstanding Universal Value of the Naval Port of Karlskrona are located within the boundaries of the 320.417-ha serial property, including the city of Karlskrona and its grid plan; the naval dockyard and harbour; the inner fortifications at Ljungskår, Mjölmarholmen, Koholmen, Godnatt, and Kurrholmen; the outer fortifications at Drottningkärs Citadel and Kungsholms Fort; and Skårfva Manor House and the Crown Mill at Lyckeby located in the naval port's environs. The boundaries of the property adequately ensure the complete representation of the features and processes that convey the property's significance, and there is a 1,105,077-ha buffer zone. The property does not suffer unduly from adverse effects of development and/or neglect. While the city plan is preserved and the original vision for and planned functions of the city are still legible today, the majority of the property is part of a living urban environment facing continual pressures for change.

#### Authenticity

The Naval Port of Karlskrona is authentic in terms of its location and setting, forms and designs, and materials and substances, as well as some of its uses and functions. Various kinds of cultural environments as well as individual buildings are largely preserved. In 2005, when Karlskrona became Sweden's national marine port, its role as an active naval port was strengthened. The Swedish authorities believe that the continued use of this historical environment will provide the best protection,

and will assist in maintaining the property's authenticity. Several older buildings and constructions in the port area have been restored in order that they may be reused.

### **Protection and management requirements**

The serial property of the Naval Port of Karlskrona consists of ten components, within which a total of 91 buildings are protected under the Swedish Ordinance for State-owned Listed Buildings. An additional 47 areas with buildings are protected by the Historic Environment Act (1988:950). (Each listing can comprise a number of buildings.) The property is also designated as an Area of National Interest and its cultural environment is protected under the Swedish Environmental Code. Karlskrona Municipality is responsible for preserving the values of this area through physical planning pursuant to the Planning and Building Act (1987). The Blekinge County Administrative Board has supervisory authority over this property. In this role, it is responsible for protecting the attributes that express the Outstanding Universal Value of the World Heritage property by ensuring that the values of the Area of National Interest are not tangibly damaged. The Board may issue statements in this respect when, for instance, Karlskrona Municipality's detailed plans are circulated for consultation. Actions taken outside the defined Area of National Interest must also ensure that this area's values are maintained. The Naval Port of Karlskrona is included in the Blekinge Archipelago Biosphere Reserve (UNESCO Man and Biosphere Programme, declared in 2011).

The serial property is owned and/or managed by a combination of public and private concerns. The Swedish Fortification Agency owns and maintains buildings and objects in the military area used by the Swedish Armed Forces, and the National Property Board owns and maintains a number of buildings, including the Drottningstjär Citadel. Both owners have long-term conservation plans. The Parish of Karlskrona manages two of the three church buildings; the Municipality of Karlskrona manages the Crown Mill at Lyckeby; and private stakeholders own the Kungshall Storehouse and Skårfva Manor House, among other components. The Blekinge County Administrative Board awards grants for the conservation of privately owned listed buildings. Their maintenance is carried out under the supervision of experts in heritage conservation. A management plan adopted in 2005 and revised in 2009 aims to preserve and develop the Naval Port of Karlskrona.

But because an evaluation of older plans has only just begun, the cultural values in large parts of the World Heritage property are currently not safeguarded. This is evident in regard to the rebuilding of certain protected buildings and in decisions involving newly declared listed buildings. Extensive new construction has taken place in some areas, and additional construction is planned within central parts of the World Heritage property.

Sustaining the Outstanding Universal Value of the property over time will require further protecting its attributes and reformulating the present management plan to ensure that these attributes are managed appropriately in the context of the ongoing development of the city and the continual pressures for change that face this living urban environment.



## LÄNSSTYRELSEN BLEKINGE LÄN

Avdelningen för  
Samhällsutveckling  
Anna-Karin Skiöld  
010-2240196

## YTTRANDE

2017-04-19

Dnr 436-1503-17

1 (2)

Karlskrona Kommun  
Anders Söderberg  
371 83 Karlskrona

### Yttrande över utredningar rörande posthuset och ett planerat kulturhus i Karlskrona

#### Bakgrund

Anders Söderberg, Karlskrona kommun, presenterade tre utredningar rörande posthuset i Karlskrona för Lars Olsson och Anna-Karin Skiöld, Länsstyrelsen, den 23 mars. Utredningarna består av ”Karlskrona posthus. Antikvarisk förundersökning”, ”Heritage impact assessment. Karlskrona posthus” och ”Utlåtande. Rivning av det före detta posthuset, Karlskrona”. Utredningarna har tagits fram av Nyréns Arkitektkontor på uppdrag av kommunen för att utreda möjligheterna till att uppföra ett kulturhus på platsen. Kommunen önskade få del av Länsstyrelsens yttrande.

#### Sammanfattning

Länsstyrelsen bedömer att kommunen låtit ta fram ett gediget material som kan ligga till grund för kommande ställningstaganden inför posthusets framtid och planerna för ett nytt kulturhus. De tre rapporterna redogör för posthusets historik, kulturhistoriska värde samt en påbyggnads/rivnings påverkan på världsarvet och dess värden.

Länsstyrelsen ser sammanfattningsvis positivt på en utveckling av platsen och att planerna på ett nytt kulturhus kan komma vidare.

#### Synpunkter

Karlskrona posthus. Antikvarisk förundersökning  
Länsstyrelsen anser att det var bra att göra en antikvarisk förundersökning av posthuset för att tydliggöra byggnadens kulturhistoriska värden. Rapporten är en bra sammanfattning över byggnadens historik. Enligt Blekinge Museums inventering från 1994 har posthuset pekats ut som ”byggnad av stort kulturhistoriskt värde”. Rapporten framhåller att byggnadens värde framförallt ligger i fasaden mot torget, dess anpassning till platsen och historiken kring posten och dess funktion i staden. Länsstyrelsen instämmer i den bedömningen.

Heritage impact assessment. Karlskrona posthus

Länsstyrelsen bedömer att det var motiverat att upprätta en HIA för posthuset eftersom byggnaden har en central placering i världsarvet och en förändring/påbyggnad kommer att påverka världsarvets värden. Posthuset och de planerade förändringarna har satts i relation till världsarvets OUV på ett överskådligt sätt

Länsstyrelsen anser att det är svårt att helt ta ställning till det planerade kulturhusets påverkan på världsarvet och dess OUV eftersom det inte finns några planer på hur det

Postadress  
SE-371 86 KARLSKRONA

Besöksadress  
Skeppsbrokajen 4

Telefon/Telefax  
010-22 40 000  
010-22 40 223

E-post/webbplats:  
lansstyrelsen@k.lst.se  
www.k.lst.se

Org.nr  
202100-2320

ska utformas. Eftersom kommunen vet vilken yta kulturhuset minst måste ha så är det enbart en volymstudie som redovisats.

Länstyrelsen anser att platsen är bra för ett kulturhus och att "Stortorget som offentligt rum" skulle förstärkas genom att denna funktion skulle förläggas dit. Länsstyrelsen instämmer även i att det skulle bli en positiv effekt av att kvarteret skulle bebyggas fullt ut. Karlskronas karaktäristiska stadsplan med strålgator skulle förstärkas med en byggnad med skarp vinkel. Länsstyrelsen framhåller vidare att det är viktigt att volymerna anpassas till torget i helhet men framförallt underordnar sig Fredrikskyrkan och stadens siluett. Det arkitektoniska utformningen är även den viktig och Länsstyrelsen är inte övertygad om att den bästa lösningen är en om- och tillbyggnad av befintligt hus där eventuellt bara torgfasaden skulle bibehållas. Även om fasaden har höga kulturhistoriska värden är det viktigt att man ser över alternativen till utformning av en ny byggnad för att den byggnaden ska få största möjliga egenvärde arkitektoniskt.

Utlåtande. Rivning av det före detta posthuset, Karlskrona

Länstyrelsen instämmer i att posthuset besitter kulturhistoriska värden. Det är en byggnad som tydligt representerar sin tid. På ett återhållsamt men tydligt sätt har den ursprungliga funktionen förtydligats i fasaden. Länsstyrelsen instämmer vidare i att en rivning skulle innebära en negativ kulturhistorisk påverkan men att världsarvets OUV inte skulle påverkas nämnvärt. En rivning bör ställas i relation till de alternativ som finns. Om det enbart är byggnadens fasad mot torget som ska bibehållas så bör det motiveras av att denna fasad har exceptionellt höga värden och att dessa värden skulle kvarstå trots en kraftig på- och ombyggnad.

I detta ärende har avdelningschef Lars Olsson beslutat och bebyggelseantikvarie Anna-Karin Skiöld varit föredragande.



Lars Olsson



Anna-Karin Skiöld

**Nyréns Arkitektkontor**  
**2022**